



4, Queens Gate,
South Kensington, SW7

£850 Per Week,

NAPIER WATT

T: 0207 935 0011
E: enquiries@napierwatt.co.uk
W: napierwatt.co.uk

35 Berkeley Square, Mayfair, London, W1J 5BF







Description

An extremely well-presented one-bedroom apartment situated in a new development in South Kensington. This third floor (with lift) property comprises a living room with wooden flooring, open plan kitchen with Gaggenau appliances, a double bedroom with fitted storage space and en-suite bathroom and a guest cloakroom. The building boasts a day-time porter and is moments from Hyde Park, not to mention the amenities and transport links of South Kensington tube station (District Line). Available, furnished.

1 Bedroom : 1 Bathroom : Guest W.C. : Lift : Porter : Kensington and Chelsea Council Tax Band H : EPC Rating C

Key Features

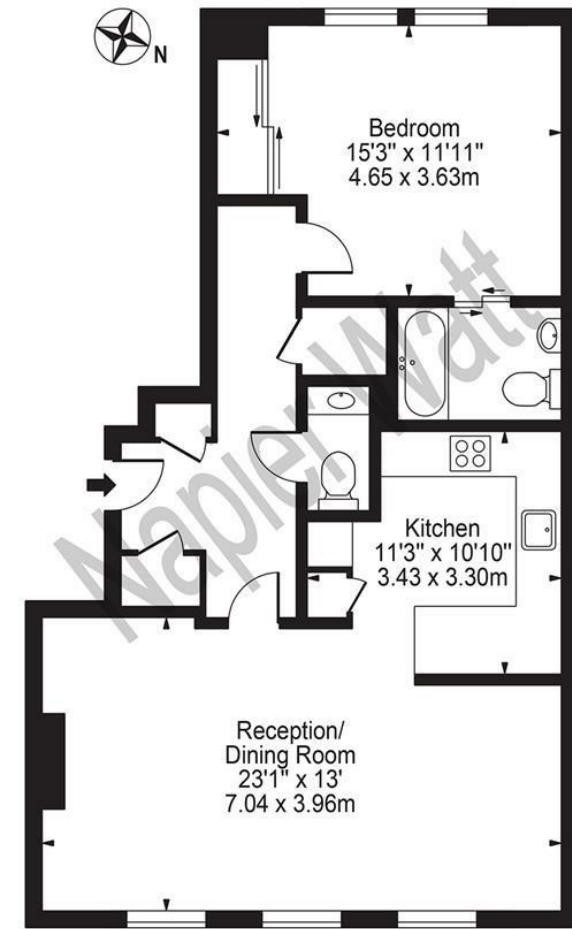
- PASSENGER LIFT
- CLOSE PROXIMITY TO KENSINGTON GARDENS
- CARETAKER

Terms

Fees & Charges: Tenancies exceeding £100,000 Per annum £480 inc VAT, Tenancies where a company is a tenant £480 Inc VAT.

Queen's Gate

Approx. Gross Internal Area 732 Sq Ft - 68.01 Sq M



Third Floor
For Illustration Purposes Only - Not To Scale

This floor plan should be used as a general outline for guidance only and does not constitute in whole or in part an offer or contract. Any intending purchaser or lessee should satisfy themselves by inspection, searches, enquiries and full survey as to the correctness of each statement. Any areas, measurements or distances quoted are approximate and should not be used to value a property or be the basis of any sale or let.

IMPORTANT: We would inform prospective purchasers that these sales particulars have been prepared as a general guide only. A detailed survey has not been carried out, nor the services, appliances and fittings tested. Room sizes should not be relied upon for furnishing purposes and are approximate. If floor plans are included, they are for guidance only and illustration purposes only and may not be to scale. If there are any important matters likely to affect your decision to buy, please contact us before viewing the property.