



16, Montagu Street,
Marylebone, W1H

Asking Price £2,650,000, Leasehold

NAPIER WATT

T: 0207 935 0011
E: enquiries@napierwatt.co.uk
W: napierwatt.co.uk

35 Berkeley Square, Mayfair, London, W1J 5BF







Description

Brand newly refurbished luxury two bedroom, two bathroom apartment with a huge west facing private roof terrace.

Internally the property is in amazing condition, having been lovingly interior designed and has been completely remodeled through-out with new wood floors, bespoke kitchen and bathrooms. additional features include air conditioning.

: Entrance Hall : Reception Room : Bespoke Fitted Kitchen : 2 Double Bedrooms : 2 Bathroom : Huge Private Terrace :

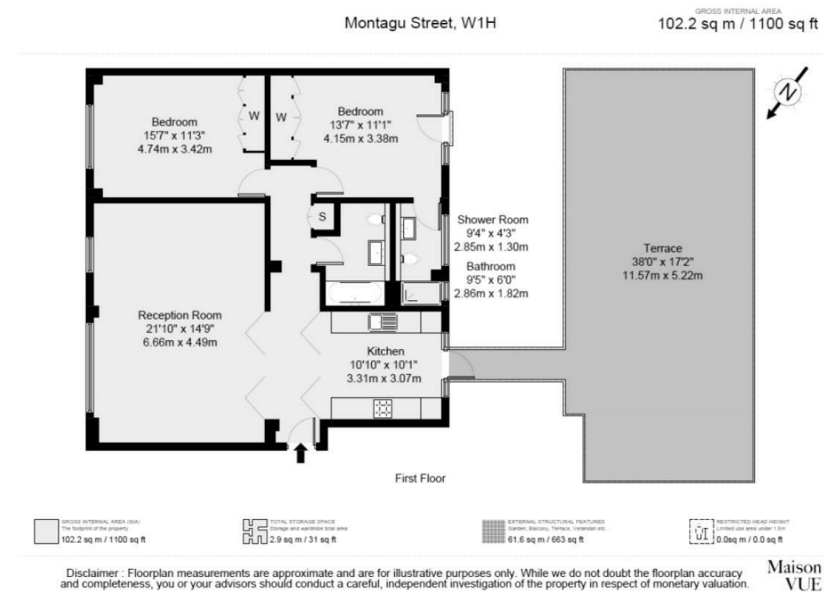
Key Features

- BRAND NEWLY REFURBISHED
- AC THROUGH OUT
- LIFT
- LARGE WEST FACING TERRACE
- LUXURY FINISH
- INTERIOR DESIGNED

Terms

Service Charge - £7,975.00 (inc. reserve fund)

125 years - brand new lease



IMPORTANT: We would inform prospective purchasers that these sales particulars have been prepared as a general guide only. A detailed survey has not been carried out, nor the services, appliances and fittings tested. Room sizes should not be relied upon for furnishing purposes and are approximate. If floor plans are included, they are for guidance only and illustration purposes only and may not be to scale. If there are any important matters likely to affect your decision to buy, please contact us before viewing the property.