



, St Mary Abbots Court,
Warwick Gardens, W14

Asking Price £3,000,000, Leasehold - Share of Freehold

NAPIER WATT

T: 0207 935 0011
E: enquiries@napierwatt.co.uk
W: napierwatt.co.uk

35 Berkeley Square, Mayfair, London, W1J 5BF







Description

An elegant four-bedroom lateral apartment in a highly desirable portered block in Kensington. An elegant, spacious (2,303 sq.ft approx.) and well-designed lateral apartment offering an abundance of natural light situated on the top (6th) floor with lift of this well maintained portered block. Residents benefits from a 24-hour porter, communal garden and lifts. St Mary Abbot's Court is located on the corner of Warwick Gardens and High Street Kensington, benefitting from numerous shopping, entertainment and transport facilities and the nearby open spaces of Holland Park. A private single garage is available by separate negotiations.

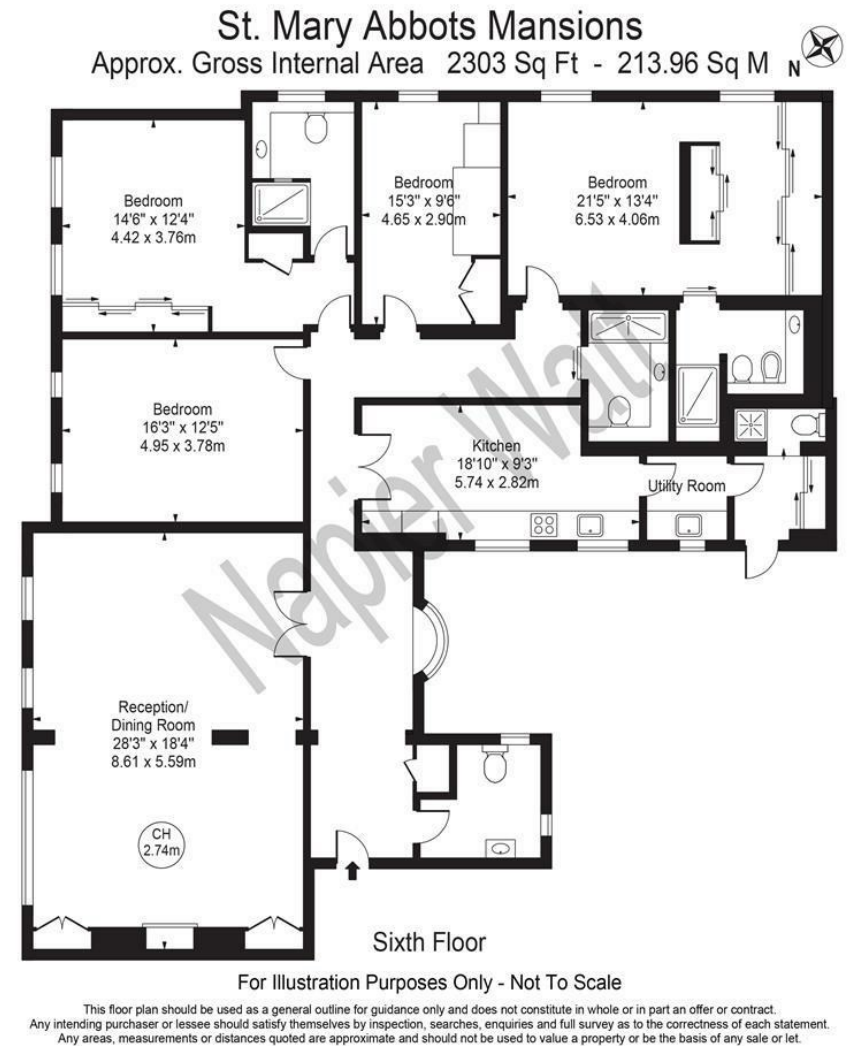
4 Bedrooms : Shower Room : 2 En Suite Shower Rooms : Guest WC : 2 Reception Rooms : Kitchen : Utility Room/Guest WC : Lift : 24 Hour Porter : Communal Gardens : Share of Freehold

Key Features

- BRIGHT AND LIGHT
- SIXTH FLOOR WITH LIFT
- SHARE OF FREEHOLD
- 24 HOUR PORTERAGE
- ATTRACTIVE OUTLOOK
- COMMUNAL GARDEN
- FARAGE AVAILABLE BY SEP NEG
- CLOSE HOLLAND PARK

Terms

Share of Freehold - Leasehold: 998 years
GARAGE AVAILABLE BY SEPARATE NEGOTIATION



IMPORTANT: We would inform prospective purchasers that these sales particulars have been prepared as a general guide only. A detailed survey has not been carried out, nor the services, appliances and fittings tested. Room sizes should not be relied upon for furnishing purposes and are approximate. If floor plans are included, they are for guidance only and illustration purposes only and may not be to scale. If there are any important matters likely to affect your decision to buy, please contact us before viewing the property.