



King Henrys Reach, Manbre Road,  
Hammersmith, W6

£3,650 Per Calendar Month

NAPIER WATT

T: 0207 935 0011  
E: [enquiries@napierwatt.co.uk](mailto:enquiries@napierwatt.co.uk)  
W: [napierwatt.co.uk](http://napierwatt.co.uk)

35 Berkeley Square, Mayfair, London, W1J 5BF









## Description

A spacious, light, and airy two double bedroom (with two en-suite bathrooms) flat based in the gated development of King Henry's Reach. This second floor apartment (with lift) of approximately 1,238sq ft / 115sq m comprises a master bedroom with en-suite, second bedroom with en-suite, kitchen and bright living room leading onto a fantastic south-western facing terrace with uninterrupted views over the Thames. This private, secure and peaceful portered building is ideally located along the river whilst being walking distance from all the amenities and transport links of Hammersmith. The apartment also benefits from secure allocated parking.

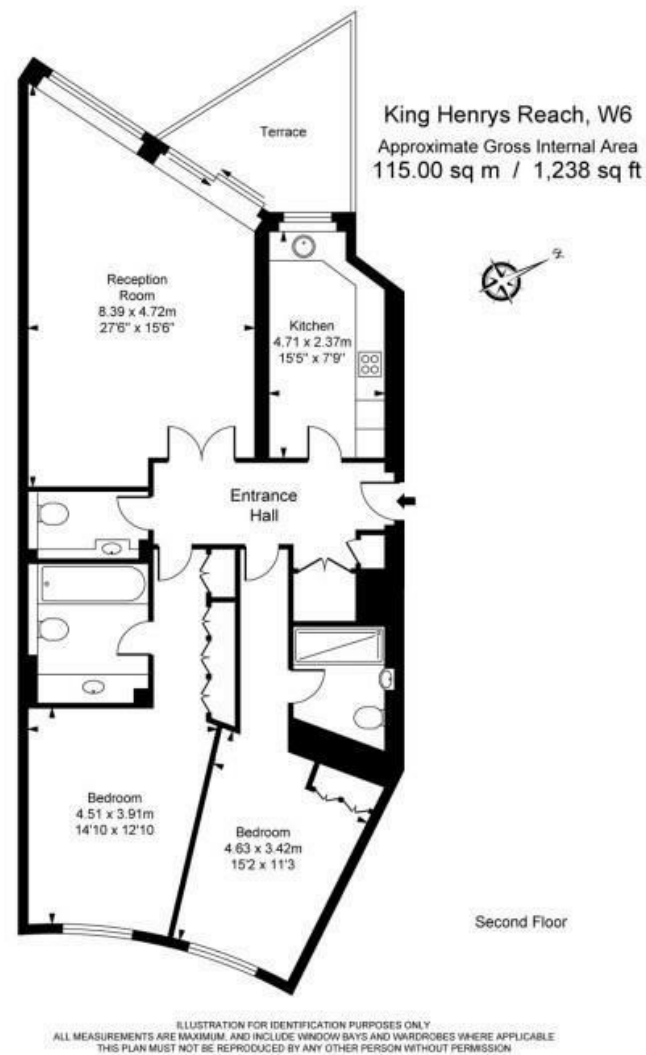
2 Bedrooms : 2 En-suite Bathrooms : Guest WC : Balcony : 24 Hour Concierge : Underground Parking : EPC Rating D : Hammersmith & Fulham Council Tax Band G

## Key Features

- 24 HOUR CONCIERGE
- BALCONY
- GOOD CONDITION
- SECURE UNDERGROUND PARKING
- VIEWS OVER RIVER THAMES

## Terms

Fees & Charges: Tenancies exceeding £100,000 Per annum £480 inc Vat, Tenancies where a company is a tenant £480 Inc Vat.



IMPORTANT: We would inform prospective purchasers that these sales particulars have been prepared as a general guide only. A detailed survey has not been carried out, nor the services, appliances and fittings tested. Room sizes should not be relied upon for furnishing purposes and are approximate. If floor plans are included, they are for guidance only and illustration purposes only and may not be to scale. If there are any important matters likely to affect your decision to buy, please contact us before viewing the property.