



, Fitzroy House,
6 Palmer Road, SW11

£1,700 Per Week,

NAPIER WATT

T: 0207 935 0011
E: enquiries@napierwatt.co.uk
W: napierwatt.co.uk

35 Berkeley Square, Mayfair, London, W1J 5BF







Description

Stunning three-bedroom apartment with two balconies, part of the Prince Of Wales Drive development by Berkeley Homes in a brand new development with leisure facilities. This spacious, eighth floor (with lift), lateral property boasts parquet flooring and comfort cooling. The accommodation of 1,532sq ft comprises a large open plan living room kitchen which leads to a balcony overlooking the communal gardens. The master bedroom also has a balcony facing the gardens, as well as a bath and shower in the en-suite. The second and third bedrooms are a good size and also have en-suite bathrooms. The apartment benefits further from a utility cupboard and guest cloakroom. This luxurious development has 24-hour concierge, indoor swimming pool, sauna, steam room and a residents' roof terrace. Available, furnished.

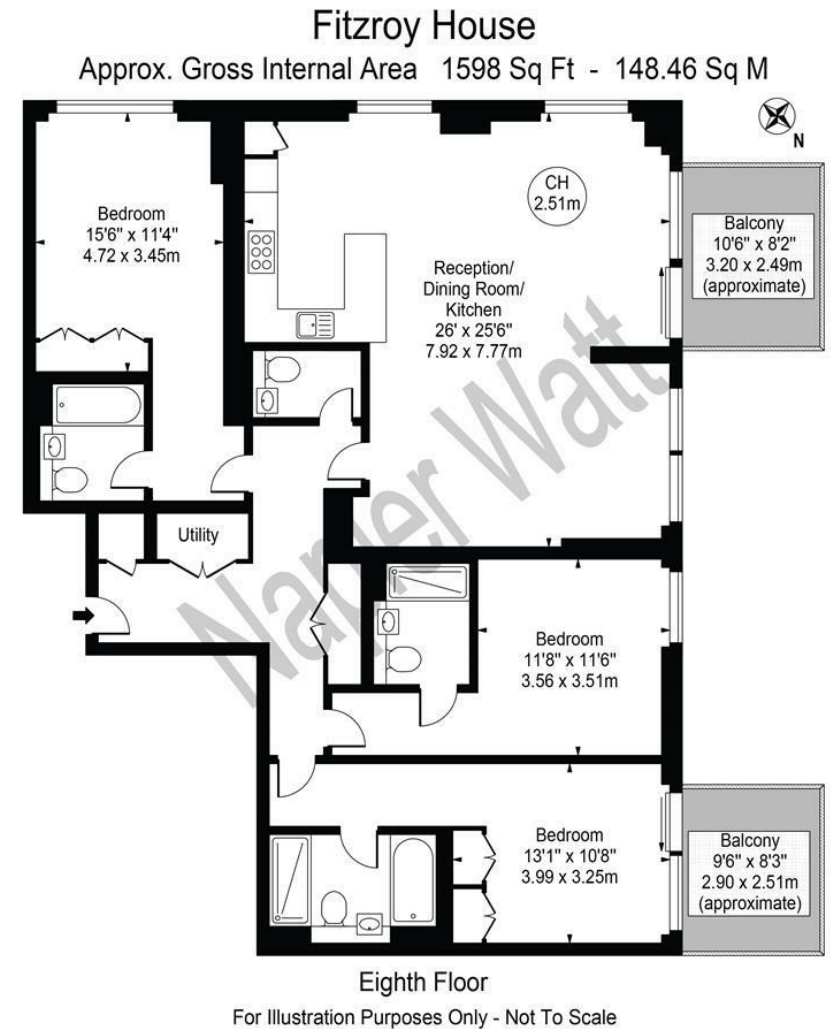
3 Bedrooms : 3 Bathrooms : 2 Balconies : Guest W.C. : Lift : 24-Hour Concierge : Swimming Pool : Spa
Facilities : Wandsworth Council Tax Band G : EPC Rating B

Key Features

- 24-HOUR CONCIERGE
- SWIMMING POOL
- COMFORT COOLING
- COMMUNAL ROOF TERRACE
- PASSENGER LIFT
- SAUNA AND STEAM ROOM
- TWO PRIVATE BALCONIES

Terms

Fees & Charges: Tenancies exceeding £100,000 Per annum £480 inc VAT, Tenancies where a company is a tenant £480 Inc VAT.



IMPORTANT: We would inform prospective purchasers that these sales particulars have been prepared as a general guide only. A detailed survey has not been carried out, nor the services, appliances and fittings tested. Room sizes should not be relied upon for furnishing purposes and are approximate. If floor plans are included, they are for guidance only and illustration purposes only and may not be to scale. If there are any important matters likely to affect your decision to buy, please contact us before viewing the property.