



Savoy House, 190 Strand,
, WC2R

Asking Price £2,000,000, Leasehold

NAPIER WATT

T: 0207 935 0011

E: enquiries@napierwatt.co.uk

W: napierwatt.co.uk

35 Berkeley Square, Mayfair, London, W1J 5BF







Description

Immaculate Two-Bedroom Apartment at 190 Strand

A beautifully presented two-bedroom, two-bathroom apartment set within the prestigious 190 Strand development in the heart of central London.

The apartment offers a spacious open-plan reception and dining area with large windows, creating a bright and comfortable living space. The contemporary kitchen is fitted with high-end appliances including Gaggenau and Miele, alongside sleek cabinetry and generous storage.

Both bedrooms are well-proportioned with built-in wardrobes. The principal bedroom benefits from a stylish ensuite bathroom, while the second bedroom is served by a separate family bathroom. The apartment is finished to an exceptional standard throughout and is offered in immaculate condition.

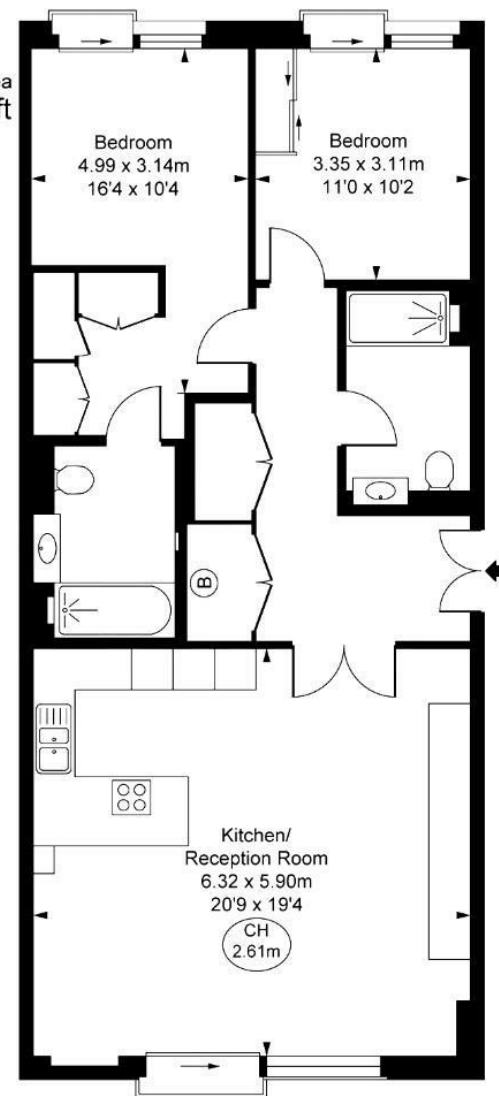
Key Features

- GYM
- CINEMA ROOM
- SPA
- 24 HOUR CONCIERGE
- SWIMMING POOL
- PASSENGER LIFT
- BUSINESS SUITE
- UNDERGROUND PARKING

Terms

Leasehold: 999 years from and including 1 January 2013 ie 986 years remaining.
Annual Service Charge: £14,000.

Savoy House,
Strand, WC2R
Approximate Gross Internal Area
92.38 sq m / 994 sq ft
(CH = Ceiling Heights)



First Floor

This plan is not to scale. It is for guidance and not for valuation purposes.
All measurements and areas are approximate only, and have been prepared in accordance with the current edition of the RICS Code of Measuring Practice
© Fulham Performance

IMPORTANT: We would inform prospective purchasers that these sales particulars have been prepared as a general guide only. A detailed survey has not been carried out, nor the services, appliances and fittings tested. Room sizes should not be relied upon for furnishing purposes and are approximate. If floor plans are included, they are for guidance only and illustration purposes only and may not be to scale. If there are any important matters likely to affect your decision to buy, please contact us before viewing the property.