



One, Dover Street,
Mayfair, W1S

£2,250 Per Week,

NAPIER WATT

T: 0207 935 0011
E: enquiries@napierwatt.co.uk
W: napierwatt.co.uk

35 Berkeley Square, Mayfair, London, W1J 5BF







Description

A superb two-bedroom penthouse with a roof terrace. Set on the fifth floor (with lift), this spacious apartment comprises a double reception room that opens out to an L-shaped roof terrace, modern fitted kitchen, a large master bedroom with en-suite bath and shower room as well as having access to the terrace, a second double bedroom with en-suite, guest cloakroom and a utility room. At 1,777sq ft, this generously proportioned property offers comfort and luxurious living in the heart of London. With views of the world famous Ritz Hotel, this apartment also boast wooden flooring and air-conditioning throughout.

Available, unfurnished.

Penthouse : 2 Bedrooms : 2 Bathrooms : Lift : Guest WC : Utility Room : Roof Terrace : EPC Rating E : Westminster Council Tax Band H

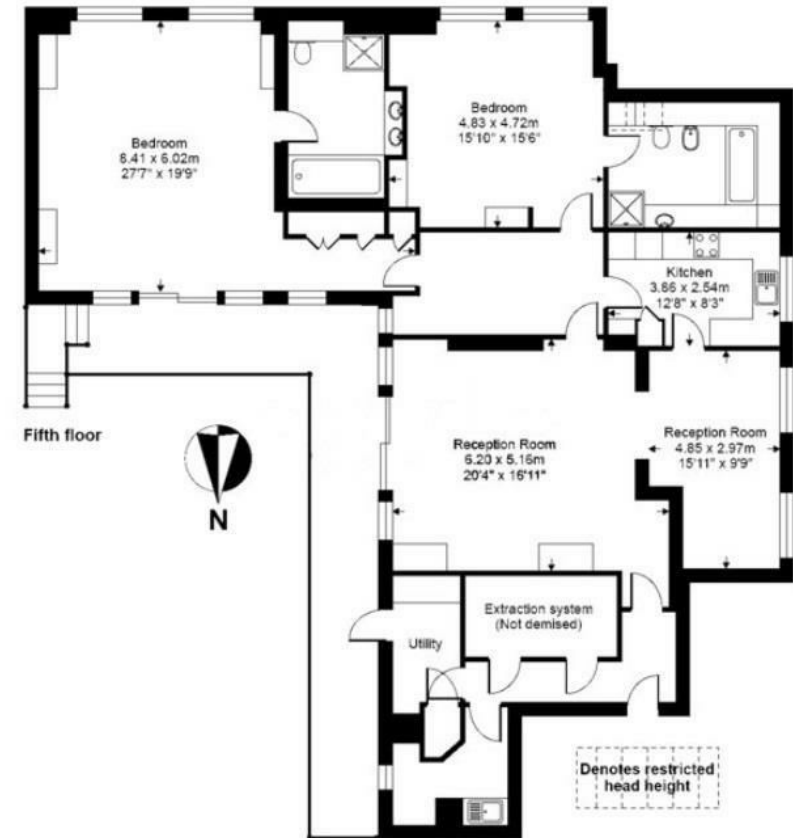
Key Features

- PENTHOUSE
- ROOF TERRACE
- SPACIOUS
- AIR-CONDITIONING
- LIFT
- TWO BEDROOMS
- WOODEN FLOORING

Terms

Fees & Charges: Tenancies exceeding £100,000 Per annum £480 inc VAT, Tenancies where a company is a tenant £480 Inc VAT.

Gross internal floor area (approx):
165 sq m / 1777 sq ft (Excludes Restricted Head Height)
For identification only - Not to scale



IMPORTANT: We would inform prospective purchasers that these sales particulars have been prepared as a general guide only. A detailed survey has not been carried out, nor the services, appliances and fittings tested. Room sizes should not be relied upon for furnishing purposes and are approximate. If floor plans are included, they are for guidance only and illustration purposes only and may not be to scale. If there are any important matters likely to affect your decision to buy, please contact us before viewing the property.