



Harcourt Tower, 67 Marsh Wall,
South Quay Plaza, E14

£995 Per Week,

NAPIER WATT

T: 0207 935 0011
E: enquiries@napierwatt.co.uk
W: napierwatt.co.uk

35 Berkeley Square, Mayfair, London, W1J 5BF





新鴻基地產
Sun Hung Kai Properties

HARBOUR

PAN PENINSULA ballymore



Description

Beautifully presented two bedroom apartment set in this modern development with 24 hour concierge in Canary Wharf. This interior designed apartment of 944sq ft is set on the on the 17th floor, boasting river and skyline views. The property comprises an open plan living room kitchen, two bedrooms both en-suite and a guest cloakroom. Boasting wooden flooring as well as air-conditioning, no expense has been spared on the bespoke finish. Residents also benefit from access to the facilities of The Quay Club, including gym, swimming pool, treatment rooms, vitality pool, sauna, steam room, screening room, private meeting rooms, coworking space, dining rooms, private bar, lounge and terrace.

2 Bedrooms : 2 En-Suites : Guest W.C. : 24-Hour Concierge : Lifts : AC : Pool : Gym : Further Facilities : Tower Hamlets Council Tax Band F : EPC Rating B

Key Features

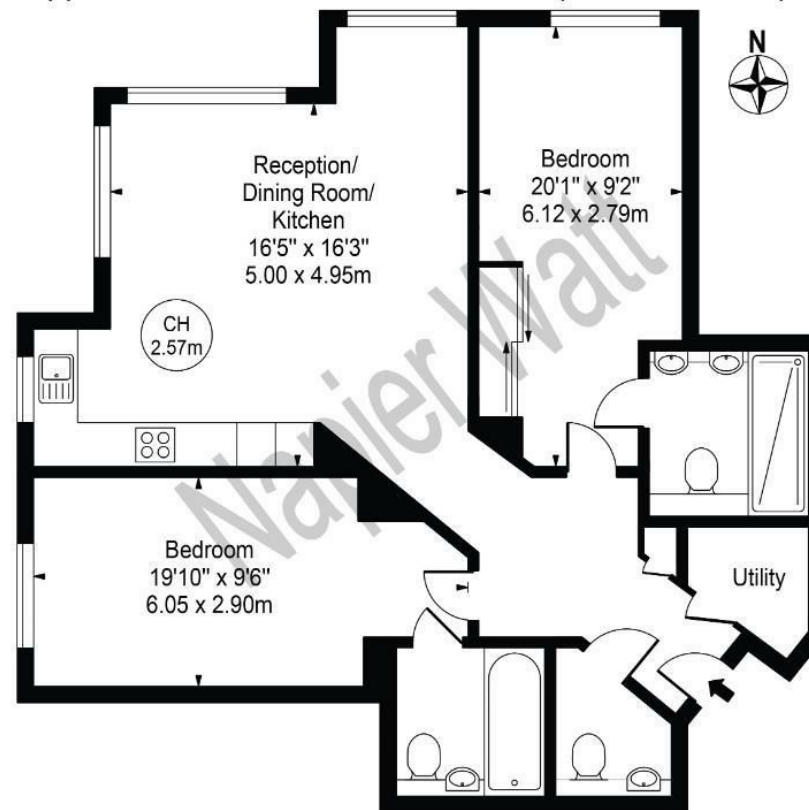
- INTERIOR DESIGNED
- AIR-CONDITIONING
- PASSENGER LIFTS
- SWIMMING POOL
- GYM
- 17TH FLOOR VIEWS

Terms

Fees & Charges: Tenancies exceeding £100,000 Per annum £480 inc VAT, Tenancies where a company is a tenant £480 Inc VAT.

Harcourt Tower

Approx. Gross Internal Area 944 Sq Ft - 87.70 Sq M



Seventeenth Floor

For Illustration Purposes Only - Not To Scale

This floor plan should be used as a general outline for guidance only and does not constitute in whole or in part an offer or contract. Any intending purchaser or lessee should satisfy themselves by inspection, searches, enquiries and full survey as to the correctness of each statement. Any areas, measurements or distances quoted are approximate and should not be used to value a property or be the basis of any sale or let.

IMPORTANT: We would inform prospective purchasers that these sales particulars have been prepared as a general guide only. A detailed survey has not been carried out, nor the services, appliances and fittings tested. Room sizes should not be relied upon for furnishing purposes and are approximate. If floor plans are included, they are for guidance only and illustration purposes only and may not be to scale. If there are any important matters likely to affect your decision to buy, please contact us before viewing the property.