



Flat 23, Armitage Apartments,
228 Great Portland Street, W1W

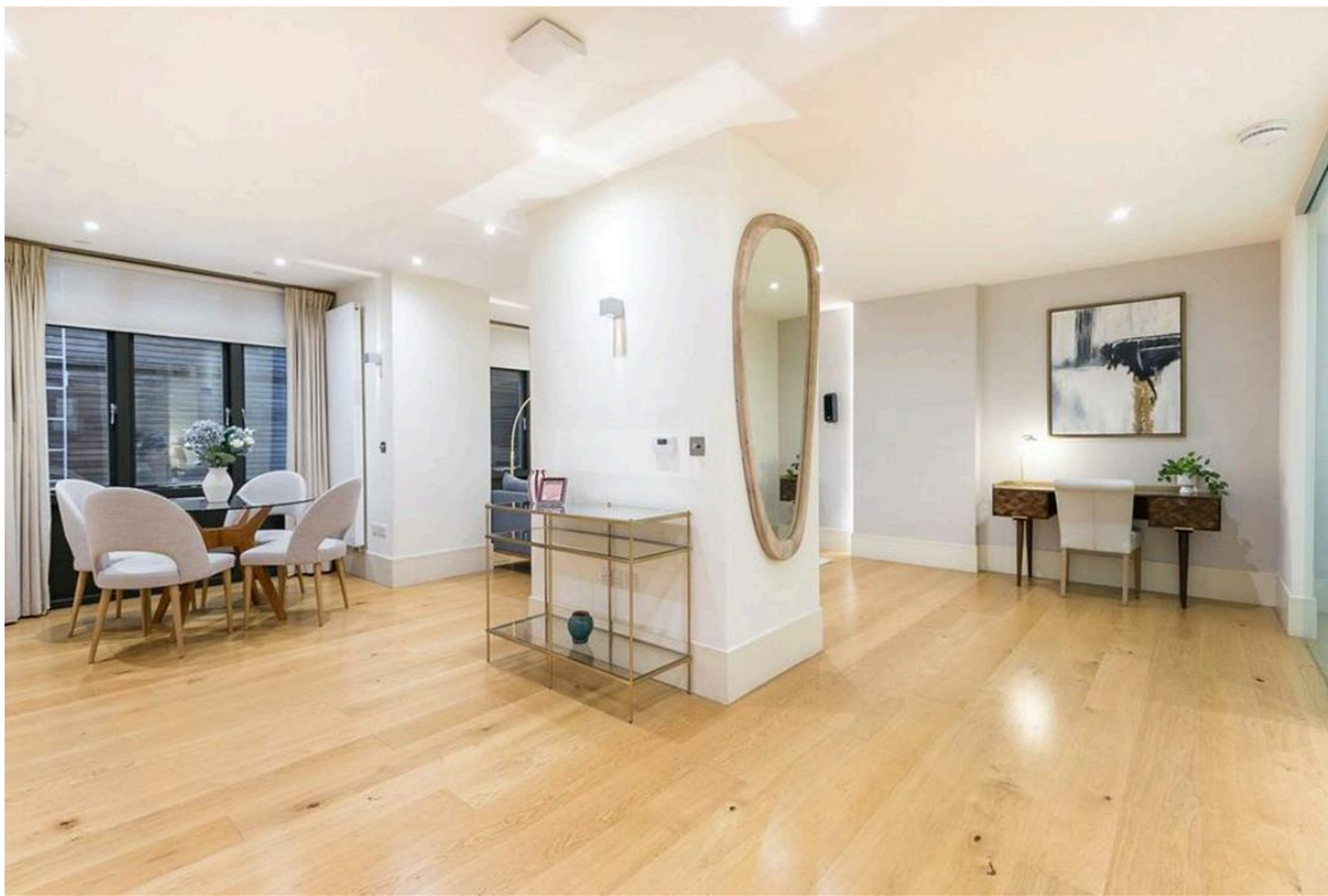
£800 Per Week,

NAPIER WATT

T: 0207 935 0011
E: enquiries@napierwatt.co.uk
W: napierwatt.co.uk

35 Berkeley Square, Mayfair, London, W1J 5BF







Description

An exceptionally well finished One Bedroom apartment based on the lower ground floor to rent in the fabulous Armitage Apartments on Great Portland Street, Marylebone W1. Interior designed throughout, accommodation comprises one bedroom, one bathroom, reception and kitchen and features oak flooring, air conditioning, 24 hour CCTV, video entry and porter. The rental is inclusive of weekly cleaning. This fabulous apartment is available on a furnished basis.

Studio Room : Bathroom : Kitchen : Concierge : Housekeeping : 24 Hour CCTV : EPC Rating C

Key Features

- DAYTIME CONCIERGE
- BROADBAND & SKY INCLUDED
- RESIDENT GYM
- AIR CONDITIONING
- WEEKLY MAID SERVICE INCLUDED

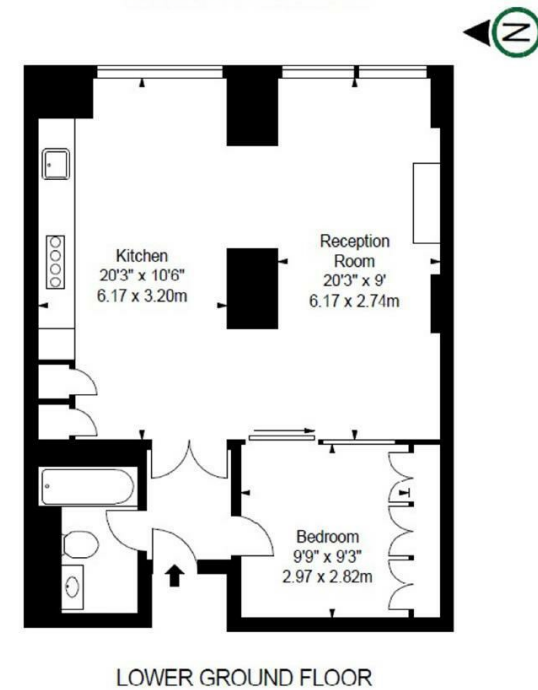
Terms

Fees & Charges: Tenancies exceeding £100,000 Per annum £480 inc VAT, Tenancies where a company is a tenant £480 Inc VAT.

GREAT PORTLAND STREET, W1

APPROX. GROSS INTERNAL AREA *
643 Ft² - 59.73 M²

ILLUSTRATION FOR IDENTIFICATION PURPOSES ONLY. NOT TO SCALE
* As Defined by RICS - Code of Measuring Practice



IMPORTANT: We would inform prospective purchasers that these sales particulars have been prepared as a general guide only. A detailed survey has not been carried out, nor the services, appliances and fittings tested. Room sizes should not be relied upon for furnishing purposes and are approximate. If floor plans are included, they are for guidance only and illustration purposes only and may not be to scale. If there are any important matters likely to affect your decision to buy, please contact us before viewing the property.