



, 14 Thurloe Place,
Knightsbridge, SW7

Asking Price £7,350,000, Freehold

NAPIER WATT

T: 0207 935 0011
E: enquiries@napierwatt.co.uk
W: napierwatt.co.uk

35 Berkeley Square, Mayfair, London, W1J 5BF







Description

Newly refurbished Grade II listed town house with a south-facing garden and located in a prime Knightsbridge location Thurtloe Place has been newly refurbished and extended, creating a fabulous family home arranged over five floors. The ground floor comprises a double aspect reception room opening onto the rear terrace and spacious south-facing garden. Downstairs, the informal reception room is flooded with natural light from the skylight. This leads through to a dining room and well-equipped modern kitchen offering ample space for entertaining and family living. The principal bedroom complete with dressing room and en suite bathroom occupies the whole first floor. There are a further four bedrooms, two with their own en suite bathroom and the other two sharing a bathroom. Thurtloe Place is found opposite The Victoria & Albert Museum in the heart of Knightsbridge. The world renowned boutiques and restaurants of the King's Road and Sloane Square are found within a mile, along with the well-connected tube stations in South Kensington, Sloane Square and Knightsbridge. The house is perfectly located to take advantage of London's finest historic gardens, with Hyde Park just 0.7 miles to the south, and Battersea Park 1.2 miles to the north.

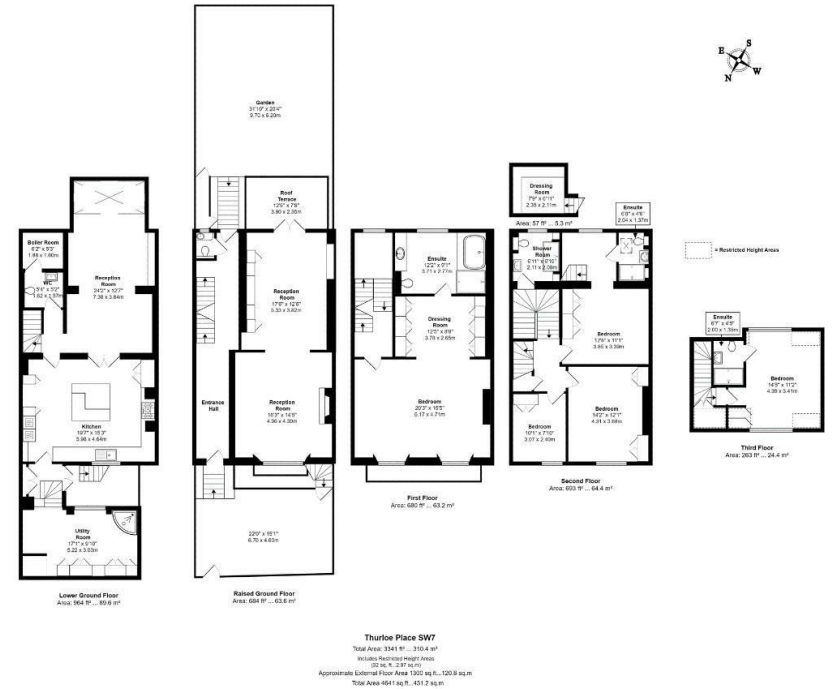
5 Bedrooms : 2 Shower Rooms : En Suite Bathroom : 2 En Suite Shower Rooms : Separate WC : Guest WC : 2 Reception Rooms : Kitchen : Garden : Terrace : 2 Balconies : EPC Rating D

Key Features

- FREEHOLD
- ROOF TERRACE
- DOUBLE RECEPTION ROOM
- 5 BEDROOMS
- GARDEN
- PRIME LOCATION

Terms

Freehold



IMPORTANT: We would inform prospective purchasers that these sales particulars have been prepared as a general guide only. A detailed survey has not been carried out, nor the services, appliances and fittings tested. Room sizes should not be relied upon for furnishing purposes and are approximate. If floor plans are included, they are for guidance only and illustration purposes only and may not be to scale. If there are any important matters likely to affect your decision to buy, please contact us before viewing the property.