



2, Little Chester Street,
Belgravia, SW1X

£5,500 Per Week,

NAPIER WATT

T: 0207 935 0011
E: enquiries@napierwatt.co.uk
W: napierwatt.co.uk

35 Berkeley Square, Mayfair, London, W1J 5BF







Description

Napier Watt are pleased to offer this well-presented house, interior designed by Squire & Partners. Located on Little Chester Street in Belgravia, the property is set in one of central London's most sought-after residential areas. The house provides over 3,000 sq ft of internal accommodation and more than 400 sq ft of outdoor space. It comprises four bedrooms, four bathrooms, a large reception room with a separate dining area, and a modern kitchen. The property further benefits from underground parking with direct access into the house.

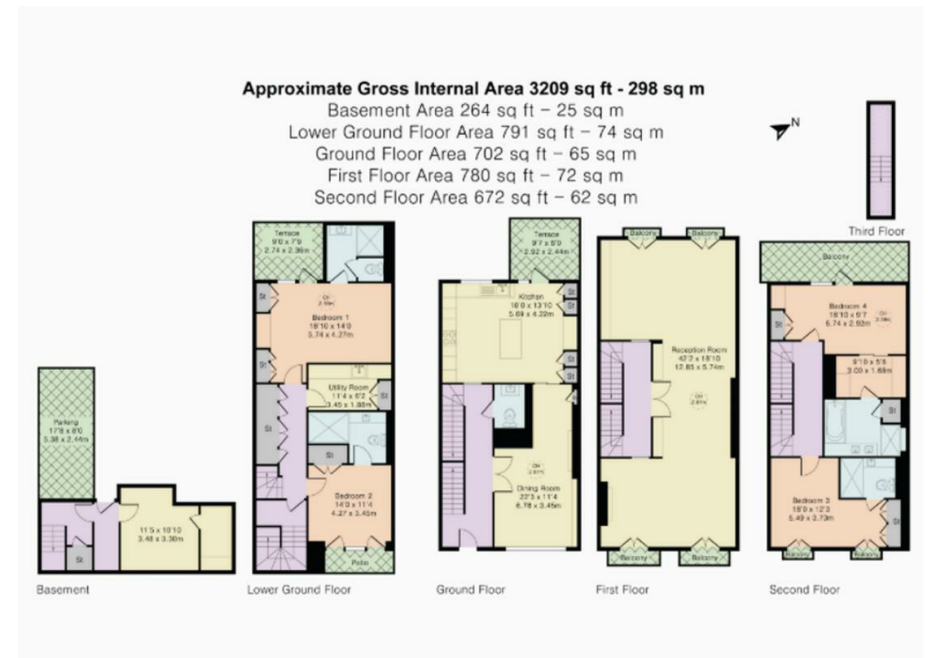
4 Bedrooms : 4 Bathrooms : Underground Parking : Balcony : Roof Terrace : EPC Rating B : Westminster Council Tax Band H

Key Features

- INTERIOR DESIGNED
- BALCONY
- ROOF TERRACE
- SECURE UNDERGROUND PARKING

Terms

Fees & Charges: Tenancies exceeding £100,000 Per annum £480 inc VAT, Tenancies where a company is a tenant £480 Inc VAT.



IMPORTANT: We would inform prospective purchasers that these sales particulars have been prepared as a general guide only. A detailed survey has not been carried out, nor the services, appliances and fittings tested. Room sizes should not be relied upon for furnishing purposes and are approximate. If floor plans are included, they are for guidance only and illustration purposes only and may not be to scale. If there are any important matters likely to affect your decision to buy, please contact us before viewing the property.