



Cleland House, John Islip Street,
Westminster, SW1P

Asking Price £2,080,000, Leasehold

NAPIER WATT

T: 0207 935 0011
E: enquiries@napierwatt.co.uk
W: napierwatt.co.uk

35 Berkeley Square, Mayfair, London, W1J 5BF







Description

SOLD MORE PROPERTIES REQUIRED A stunning two bedroom, two bathroom apartment situated within highly sought after luxury Cleland House, in the heart of Westminster. Over 1186sqft, this modern apartment features state of the art appliances and is fully furnished to a high standard throughout.

Benefit from a 24hr concierge service, swimming pool and gym and a private balcony.

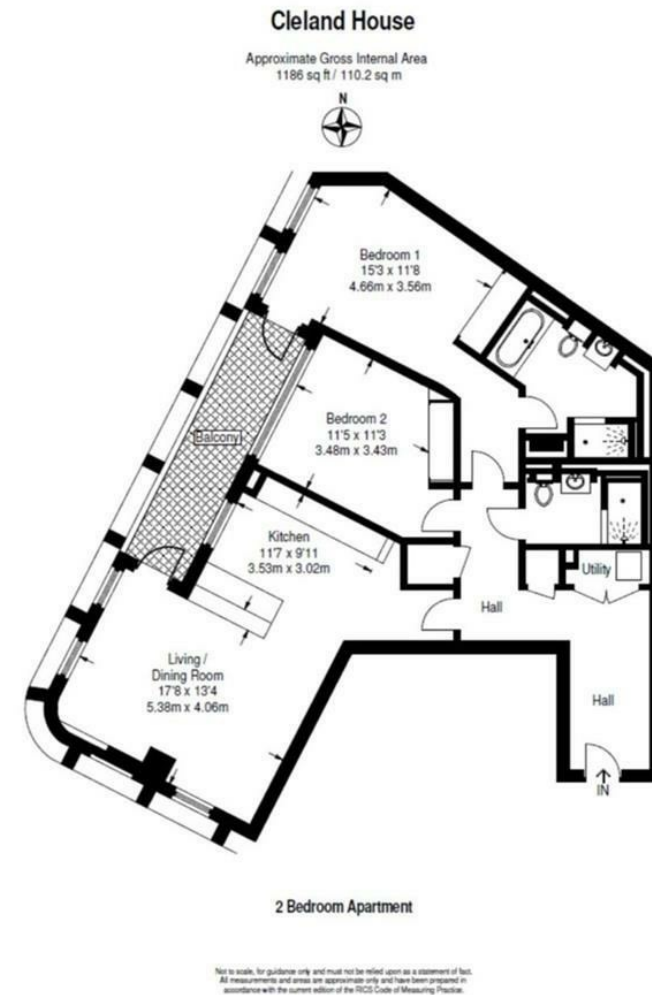
Entrance Hall : 2 Bedrooms : Shower Room : En Suite Bathroom : Reception Room : Kitchen : Balcony : 24 Hour Concierge : Pool : Gym : EPC Rating B

Key Features

- 24 HOUR CONCIERGE
- LEISURE FACILITIES
- BALCONY
- EXCLUSIVE MODERN BUILDING
- LIFTS
- SWIMMING POOL AND GYM
- AIR CONDITIONING

Terms

Council Tax Band G



IMPORTANT: We would inform prospective purchasers that these sales particulars have been prepared as a general guide only. A detailed survey has not been carried out, nor the services, appliances and fittings tested. Room sizes should not be relied upon for furnishing purposes and are approximate. If floor plans are included, they are for guidance only and illustration purposes only and may not be to scale. If there are any important matters likely to affect your decision to buy, please contact us before viewing the property.