



, Montagu Mansions,
Marylebone, W1U

£895 Per Week,

NAPIER WATT

T: 0207 935 0011
E: enquiries@napierwatt.co.uk
W: napierwatt.co.uk

35 Berkeley Square, Mayfair, London, W1J 5BF







Description

Napier Watt present this light and airy two bedroom two bathroom property set within a charming period mansion block with 24 hour porter.

Situated on the 2nd floor and boasting high ceilings, wooden floors, modern fitted bath/shower rooms (one en-suite), spacious principle bedroom and plentiful storage. Ideally located, within walking distance to Baker Street Underground station and the fashionable Marylebone High Street.

Currently part furnished. Available Furnished/Unfurnished by negotiation.

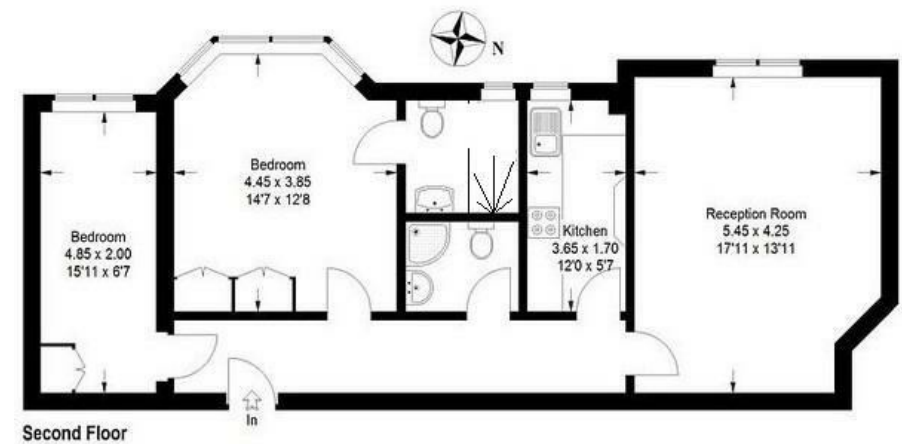
Westminster City Council, Council Tax Band G

Key Features

- 24 HOUR PORTER
- 814 SQUARE FEET
- TWO BATHS
- WOODEN FLOORS MAIN AREAS

Terms

Fees & Charges: Tenancies exceeding £100,000 Per annum £480 inc VAT, Tenancies where a company is a tenant £480 Inc VAT.



IMPORTANT: We would inform prospective purchasers that these sales particulars have been prepared as a general guide only. A detailed survey has not been carried out, nor the services, appliances and fittings tested. Room sizes should not be relied upon for furnishing purposes and are approximate. If floor plans are included, they are for guidance only and illustration purposes only and may not be to scale. If there are any important matters likely to affect your decision to buy, please contact us before viewing the property.