



South Lodge, 245 Knightsbridge,
Knightsbridge, SW7

£4,153 Per Week,

NAPIER WATT

T: 0207 935 0011
E: enquiries@napierwatt.co.uk
W: napierwatt.co.uk

35 Berkeley Square, Mayfair, London, W1J 5BF







Description

Napier Watt are delighted to offer this interiorly designed, modernised, three double bedroom, two bathroom apartment with additional guest cloakroom set on the third floor of this prestigious purpose built block located in the heart of Knightsbridge. The property offers an amazing turnkey solution when renting within Prime Central London and is offered on fully furnished basis. The property has been furnished to Highest standard throughout. Benefits include secure underground parking, 24-hour portorage, lifts, balcony, underfloor heating, air-conditioning.

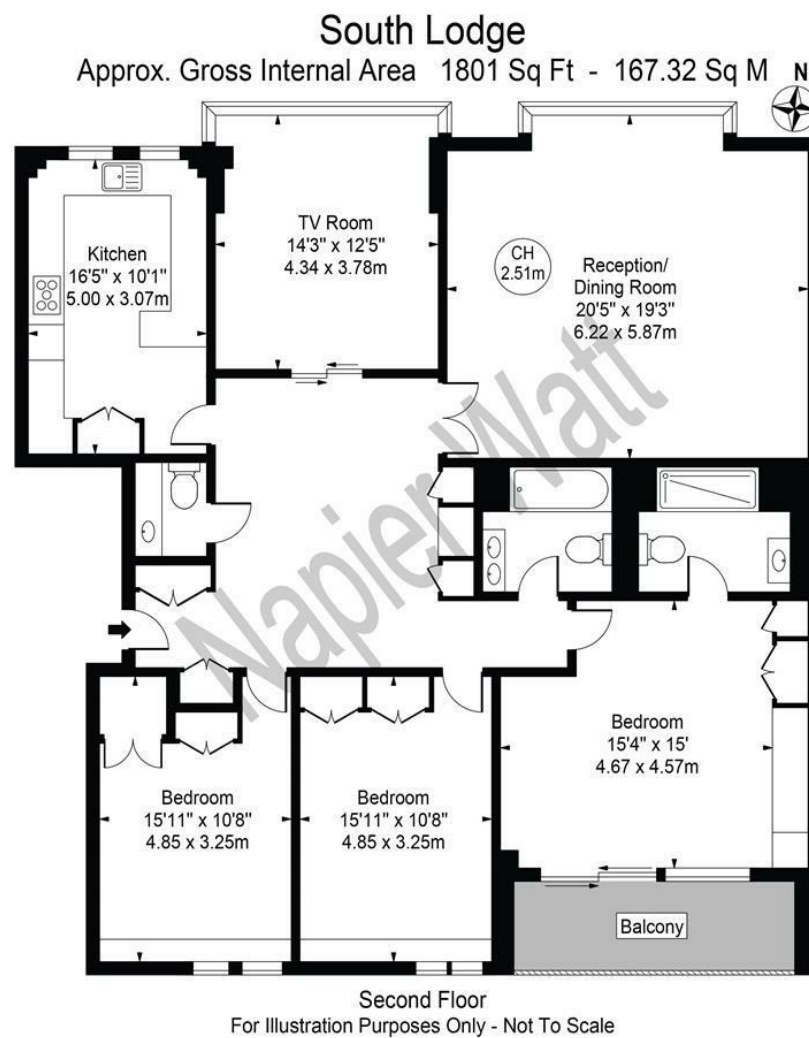
3 Bedrooms : 2 Bathrooms : 2 Receptions : Guest WC : Balcony : Parking : AC : Westminster Council Tax Band H : EPC Rating B

Key Features

- 24 HOUR PORTERAGE
- SECURE PARKING
- LIFTS
- AIR CONDITIONING
- THIRD FLOOR
- BALCONY

Terms

Fees & Charges: Tenancies exceeding £100,000 Per annum £480 inc VAT, Tenancies where a company is a tenant £480 Inc VAT.



This floor plan should be used as a general outline for guidance only and does not constitute in whole or in part an offer or contract. Any intending purchaser or lessee should satisfy themselves by inspection, searches, enquiries and full survey as to the correctness of each statement. Any areas, measurements or distances quoted are approximate and should not be used to value a property or be the basis of any sale or let.

IMPORTANT: We would inform prospective purchasers that these sales particulars have been prepared as a general guide only. A detailed survey has not been carried out, nor the services, appliances and fittings tested. Room sizes should not be relied upon for furnishing purposes and are approximate. If floor plans are included, they are for guidance only and illustration purposes only and may not be to scale. If there are any important matters likely to affect your decision to buy, please contact us before viewing the property.