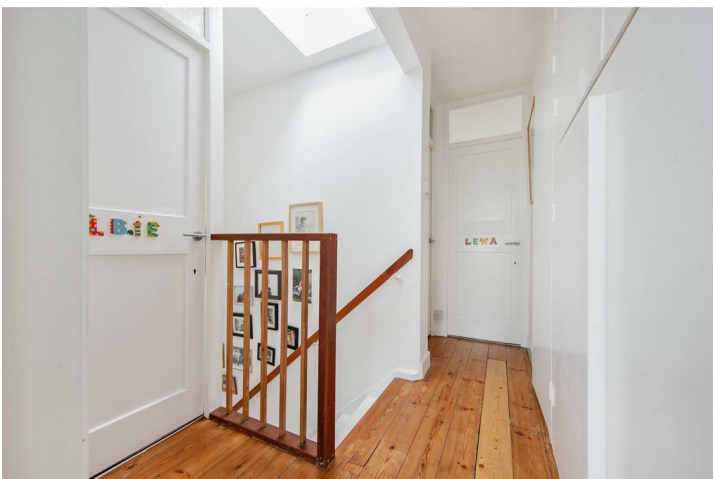


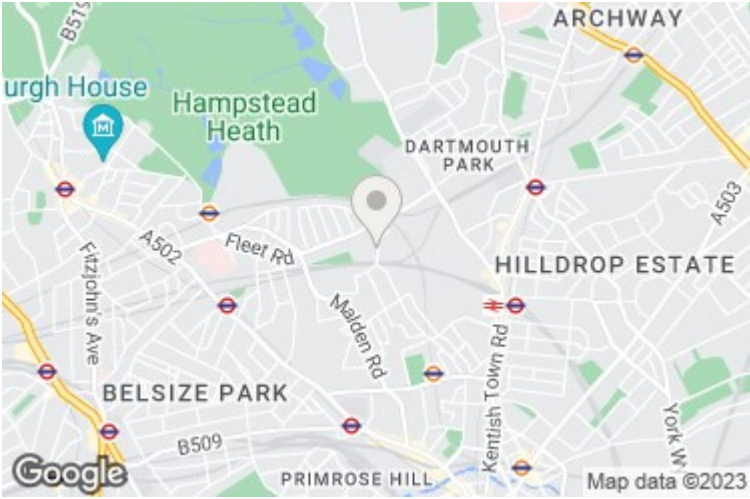
Lamble Street, Gospel Oak, NW5 4AT

£850,000

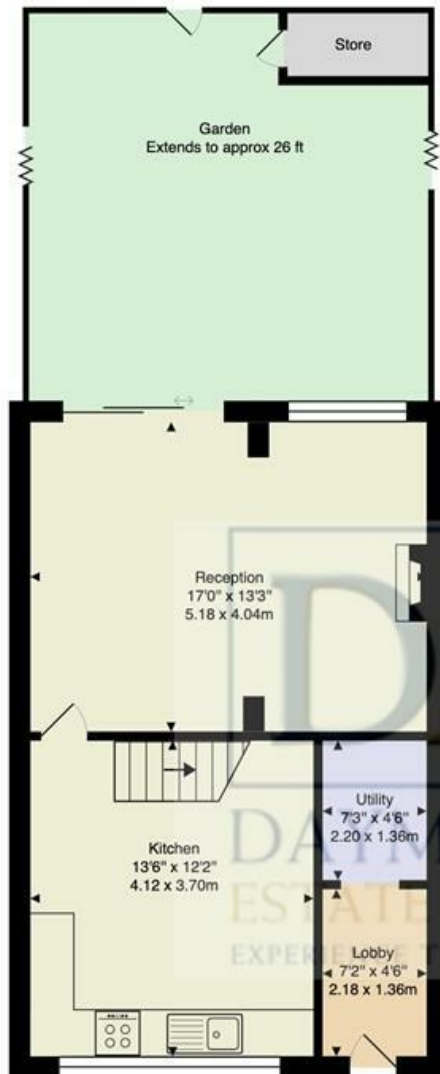
A charming three bedroom family home, just a short walking distance from the Parliament Hill entrance to Hampstead Heath. The house is presented in an excellent condition throughout, with the current owners having designed the rooms with much thought and care. There is a wonderful feeling of natural light within the whole property, and the reception benefits from direct access out to the south facing private garden. There is the option of a private parking space, and the property is situated close to the 'Outstanding' Gospel Oak Nursery & Primary school.

* THREE BEDROOMS * LARGE EAT-IN KITCHEN * BRIGHT RECEPTION * FAMILY BATHROOM * UTILITY/STORAGE ROOM * PRIVATE SOUTH FACING GARDEN * OPTION OF A PRIVATE PARKING SPACE * FREEHOLD * EPC D * COUNCIL TAX BAND E





Barrington Court, NW5



Ground Floor



First Floor

Approx. Gross Internal Area: 932 ft² ... 86.6 m²

All measurements and areas are approximate only.
Dimensions are not to scale. This plan is for guidance only and must not be relied upon as a statement of fact.

