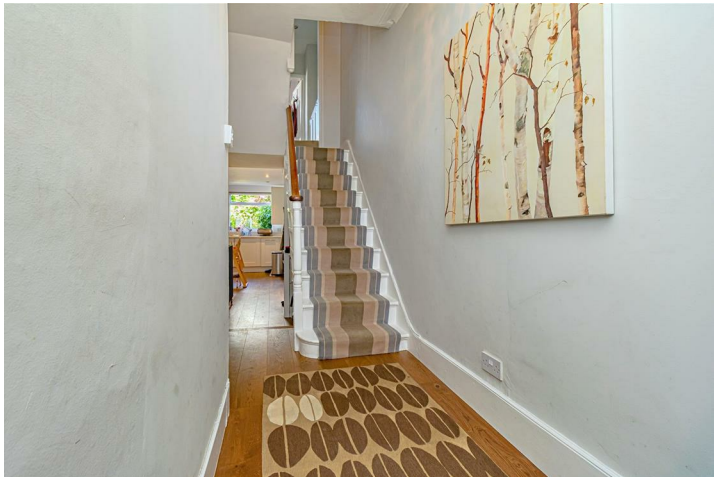
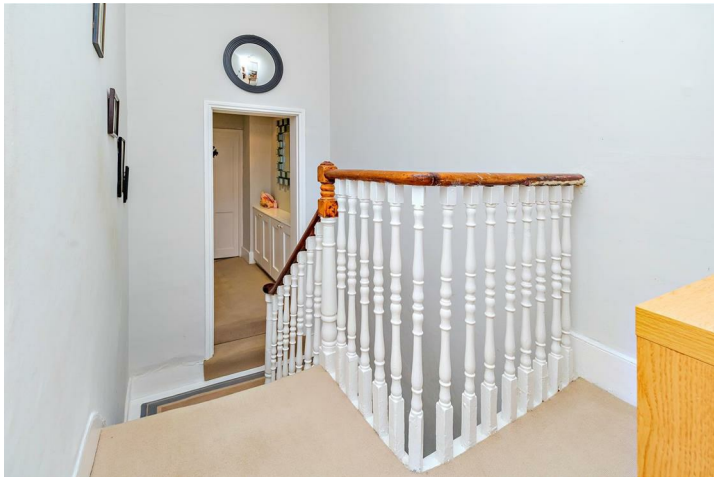


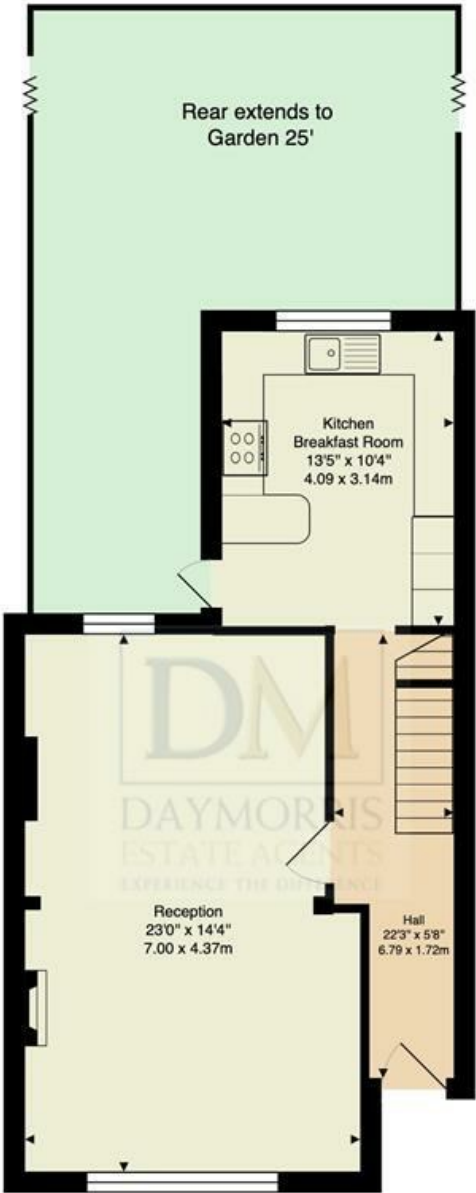
Elaine Grove, Gospel Oak, NW5 4QG

£1,299,000

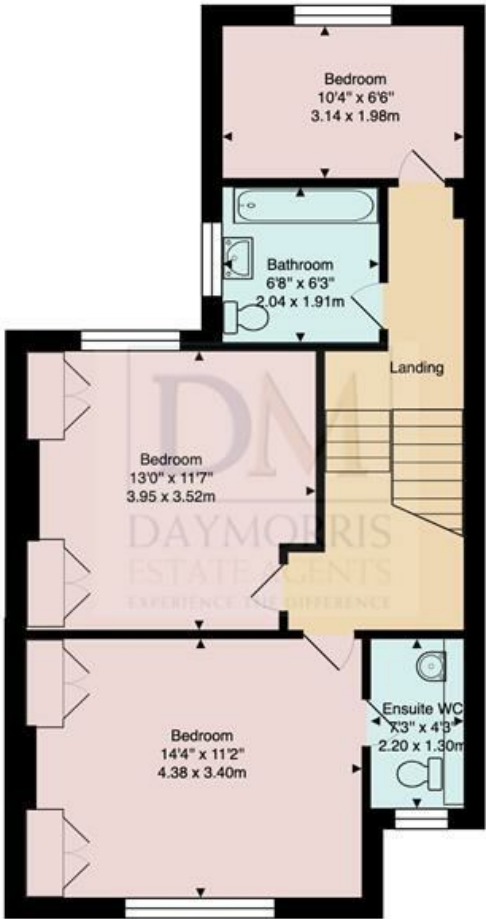
A beautifully appointed three bedroom Victorian cottage, within the pretty and highly desirable setting of 'Oak Village'. The property itself provides bright and attractive rooms throughout, and a host of period features. There is a charming patio garden at the rear of the house, and Hampstead Heath is just a short walk away, along with the 'Outstanding' Gospel Oak Primary School. A wonderful family home in a gorgeous and peaceful location.







Ground Floor



First Floor

Approx. Gross Internal Area: 1116 ft² ... 103.7 m²

All measurements and areas are approximate only.
Dimensions are not to scale. This plan is for guidance
only and must not be relied upon as a statement of fact.
(c) Peninsula Surveys Ltd

