

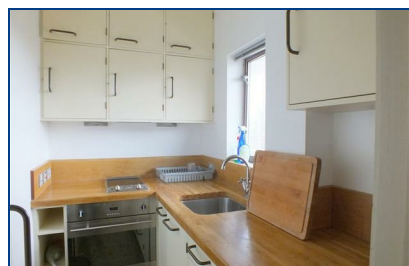
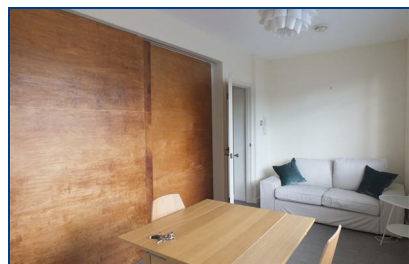


Lawn Road, , London, NW3 2XD

£315 Per Week

Lovely one bedroom flat on the top floor of this iconic 1930's building. The property boasts original features with wonderful sliding doors allowing the space to be open plan if desired. There is a separate kitchen with modern appliances. Good transport links, with only a 5 minute walk to Belsize Park Tube station. Available furnished/ Fees Apply

- RECEPTION
- SECOND FLOOR
- BEDROOM
- CLOSE TO TUBE
- SEPARATE KITCHEN
- FURNISHED/UNFURNISHED



Energy Efficiency Rating		Environmental Impact (CO ₂) Rating	
Score	Rating	Score	Rating
92-100	A	10-15	A
81-91	B	16-20	B
69-80	C	21-25	C
58-68	D	26-30	D
49-57	E	31-35	E
41-48	F	36-40	F
35-40	G	41-45	G

Not energy efficient - higher running costs

Not environmentally friendly - higher CO₂ emissions

England & Wales EU Directive 2002/91/EC