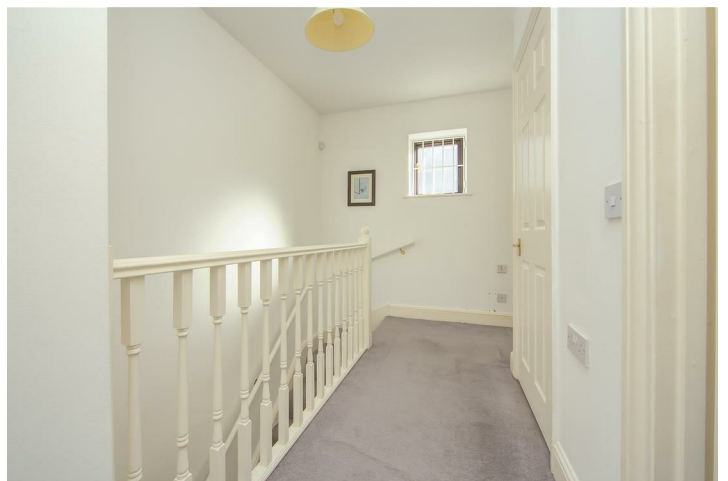
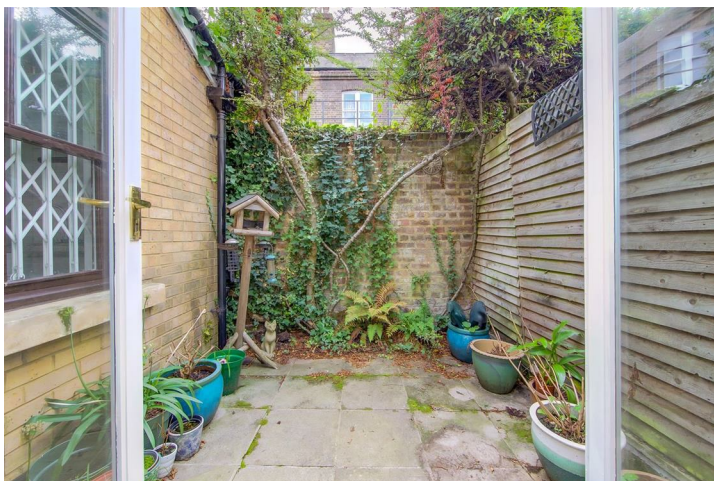


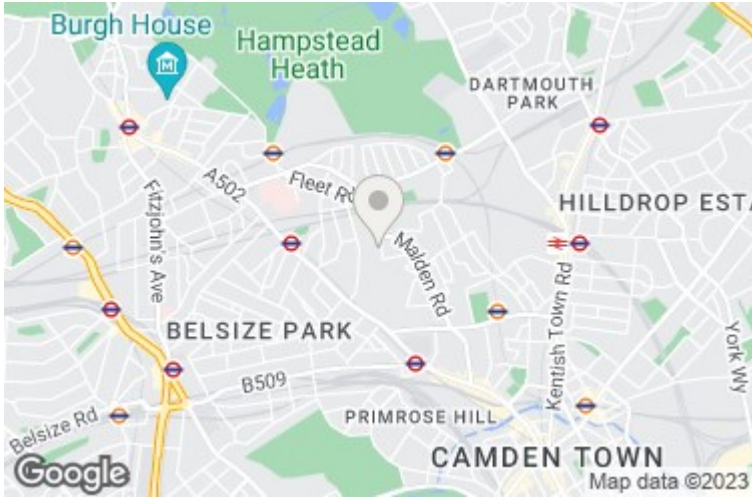
## **Wordsworth Place, Gospel Oak, NW5 4HG**

**£590,000**

A two bedroom modern house set within a quiet gated development, for people AGED 50 OR OVER ONLY. There is a pretty private garden to the rear of the property, and the option of an off street parking space within the grounds. Excellent transport links can be found nearby, with the 24 bus route a short walk away, giving quick and easy access to the West End.

**\* TWO BEDROOMS \* LARGE RECEPTION ROOM \* KITCHEN \* SHOWER ROOM \* GUEST CLOAKROOM \* PRIVATE GARDEN \* FOR PEOPLE AGED 50 OR OVER \* OFF STREET PARKING AVAILABLE \* LEASEHOLD - 90 YEARS UNEXPIRED \* EPC E \* COUNCIL TAX BAND F**





Wordsworth Place, NW5



Approx. Gross Internal Area: 839 ft<sup>2</sup> ... 78.0 m<sup>2</sup>

All measurements and areas are approximate only.  
Dimensions are not to scale. This plan is for guidance only and must not be relied upon as a statement of fact.

