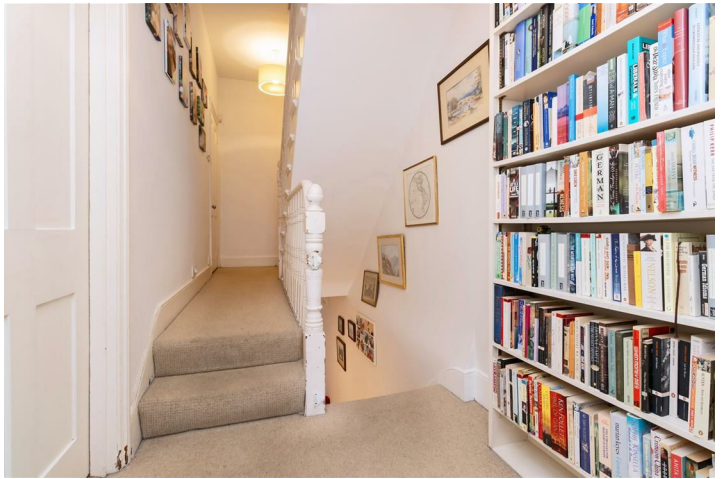




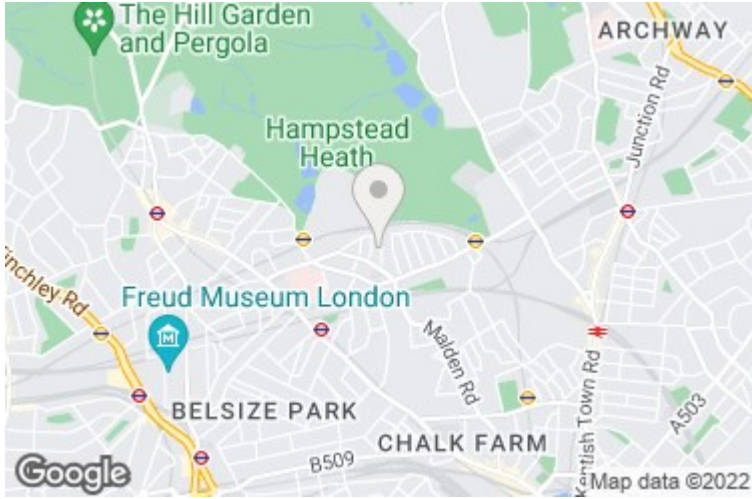
**Lisburne Road, Hampstead, NW3 2NS**

**£2,195,000**

Positioned along a quiet residential street, this five bedroom Victorian house offers excellent accommodation for the growing family, just metres from the footbridge to Parliament Hill and Hampstead Heath. There are five bedrooms and two bathrooms, along with ample entertaining space across the ground floor. A charming west facing garden can be found at the rear of the property, plus a roof terrace from the top floor, which is a real rarity on the street. An additional bonus is planning permission already in place for an extension into the attic room, in order to create perhaps a further bedroom or large study, with dual aspect windows. Drawings are available upon request.







Lisburne Road, LONDON, NW3 2NS



Total Area: 191.5sq.m. ... 2061sq.ft. (excluding loft and eaves storage)

198sq.m. ... 2131sq.ft (including eaves storage)

These details are subject to contract

All measurements are approximate and for display purposes only.

