

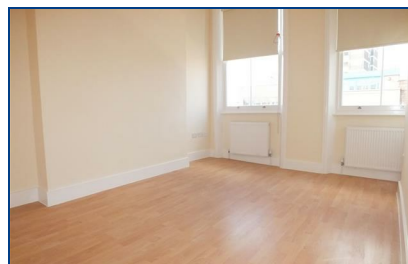


Wolsey Mews, Kentish Town, London, NW5 2DX

£380 Per Week

A newly refurbished 2 bedroom flat in the heart of Kentish Town, close to the tube station. The property offers a reception room, separate kitchen, 2 double bedrooms, shower room, double glazing, plus bike storage. UNFURNISHED and AVAILABLE NOW

- 2 BEDROOMS
- HIGH CEILINGS
- CLOSE TO PUBLIC TRANSPORT
- RECENTLY DECORATED
- SEPARATE KITCHEN
- £380PW/£1646PCM
- AVAILABLE NOW



| Energy Efficiency Rating | | | Environmental Impact (CO ₂) Rating | | |
|---|---------|-------|---|---------|-------|
| Best energy efficient - lower running costs | Current | Worst | Best environmentally friendly - lower CO ₂ emissions | Current | Worst |
| A (92-100) | | | A (92-100) | | |
| B (81-91) | | | B (81-91) | | |
| C (69-80) | | | C (69-80) | | |
| D (55-68) | | | D (55-68) | | |
| E (39-54) | | | E (39-54) | | |
| F (21-38) | | | F (21-38) | | |
| G (1-20) | | | G (1-20) | | |
| Not energy efficient - higher running costs | | | Not environmentally friendly - higher CO ₂ emissions | | |
| England & Wales EU Directive 2002/91/EC | | | England & Wales EU Directive 2002/91/EC | | |