



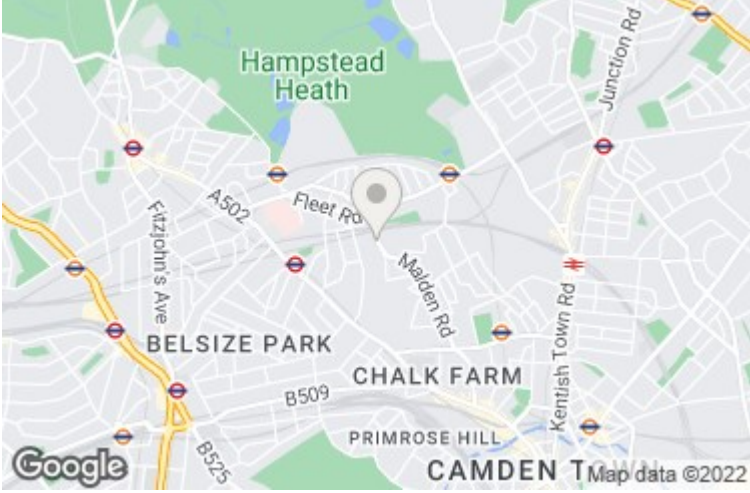
Southampton Road, Gospel Oak, NW5 4JS

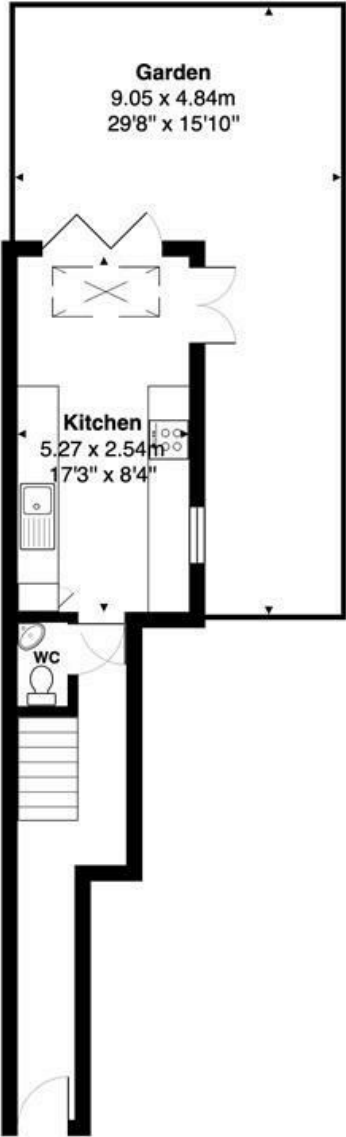
£850,000

A unique three double bedroom property benefiting from its own private entrance, with accommodation well arranged across three floors, and offered in excellent condition. To the ground floor there is a fully fitted modern kitchen/dining room leading to a private south west facing garden, and there is a lovely feeling of space and natural light throughout the whole apartment. Southampton Road is located just a short walk from the Heath and South End Green, plus the transport links at both Belsize Park and Hampstead Heath stations. The 24 bus route can be found just moments away, providing easy access to the City and West End.

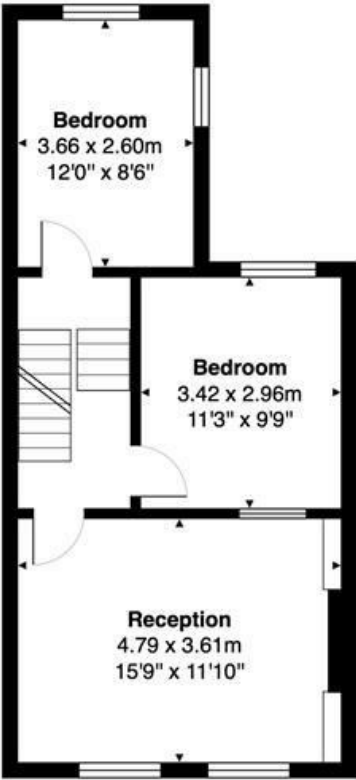
* THREE BEDROOMS * BRIGHT RECEPTION * KITCHEN/DINING ROOM * EN-SUITE SHOWER ROOM * FAMILY BATHROOM *
 PRIVATE SOUTH WEST FACING GARDEN * GUEST CLOAKROOM * SHARE OF FREEHOLD * PRIVATE ENTRANCE * EPC D *
 COUNCIL TAX BAND D







Ground Floor



First Floor



Second Floor

Total Area: 101.3 m² ... 1090 ft²
All measurements are approximate and for display purposes only.
These details are subject to contract

