



DAYMORRIS
ESTATE AGENTS
EXPERIENCE THE DIFFERENCE

Day Morris Estate Agents
2 Fleet Road, Hampstead, London, NW3 2QS
Tel: 020 7482 4282
Email: sales@daymorris.co.uk
www.daymorris.co.uk



Lady Margaret Road, London, NW5 2NG

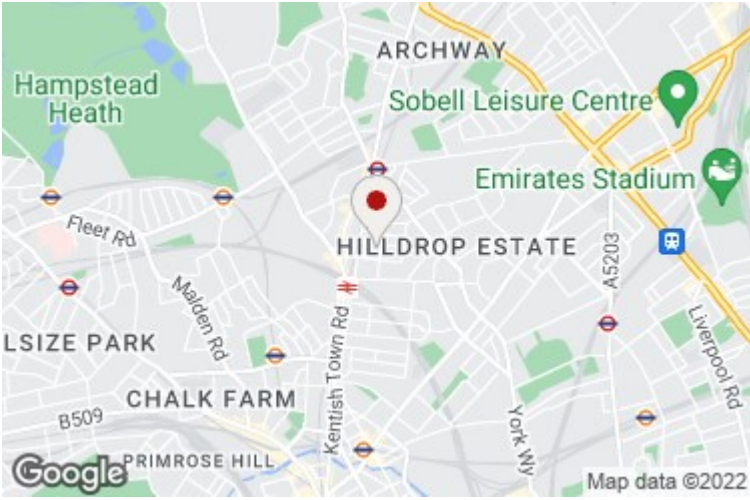
£2,995,000

Available for sale for only the second time in its one hundred and fifty year history, this substantial end of terrace Victorian property provides ample accommodation for the growing family. The house is arranged over four floors, with a large double volume reception on the raised ground floor, offering high ceilings, an abundance of natural light flowing from the dual aspect windows, and a charming open fireplace. Attractive period features can be found throughout the home, and a charming south west facing garden is at the rear.

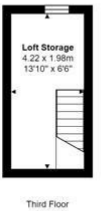
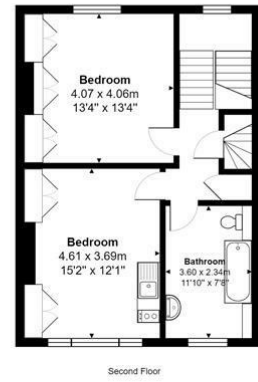
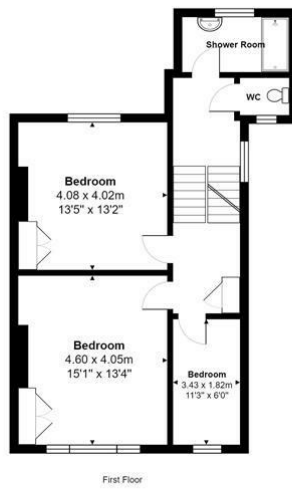
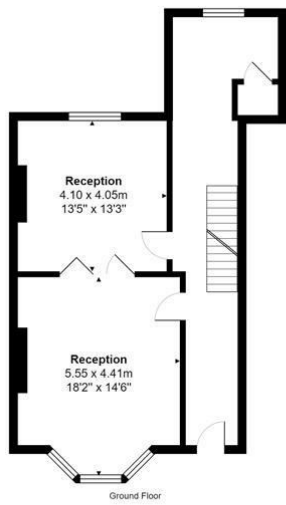
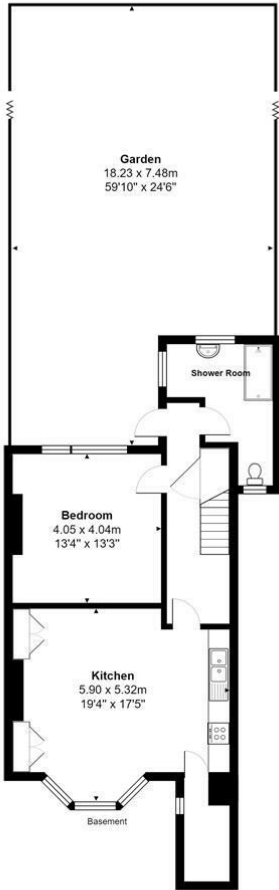
FIVE/SIX BEDROOMS * DOUBLE VOLUME RECEPTION * KITCHEN/DINER * BATHROOM * TWO SHOWER ROOMS * GUEST CLOAKROOM * ATTIC STORAGE * SOUTH WEST FACING GARDEN * RESIDENTS PERMIT PARKING * EPC D * COUNCIL TAX BAND G * FREEHOLD







Lady Margaret Road, LONDON, NW5 2NG



Total Area: 243.7 m² ... 2623 ft² (excluding loft storage)
 All measurements are approximate and for display purposes only.
 These details are subject to contract

