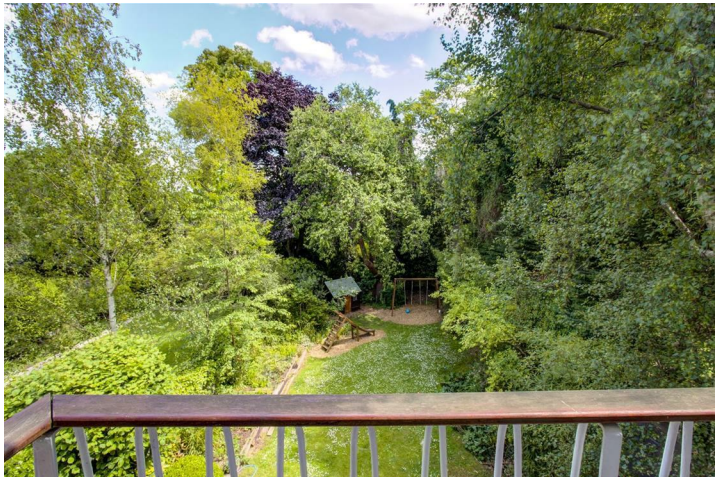


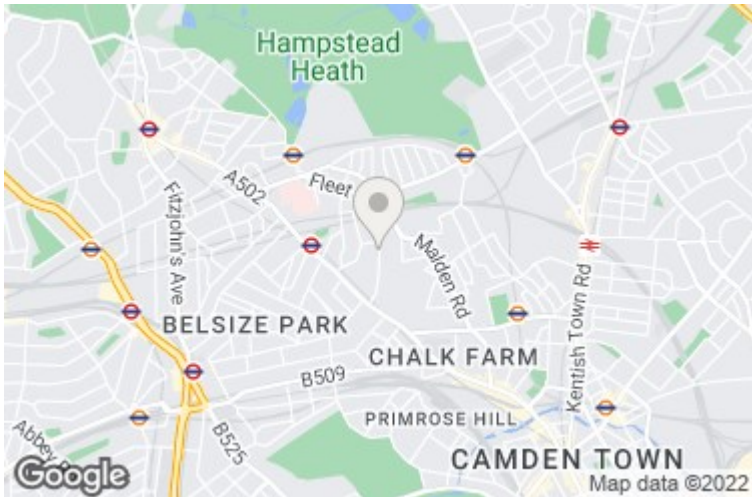
Parkhill Road, Belsize Park, NW3 2YP

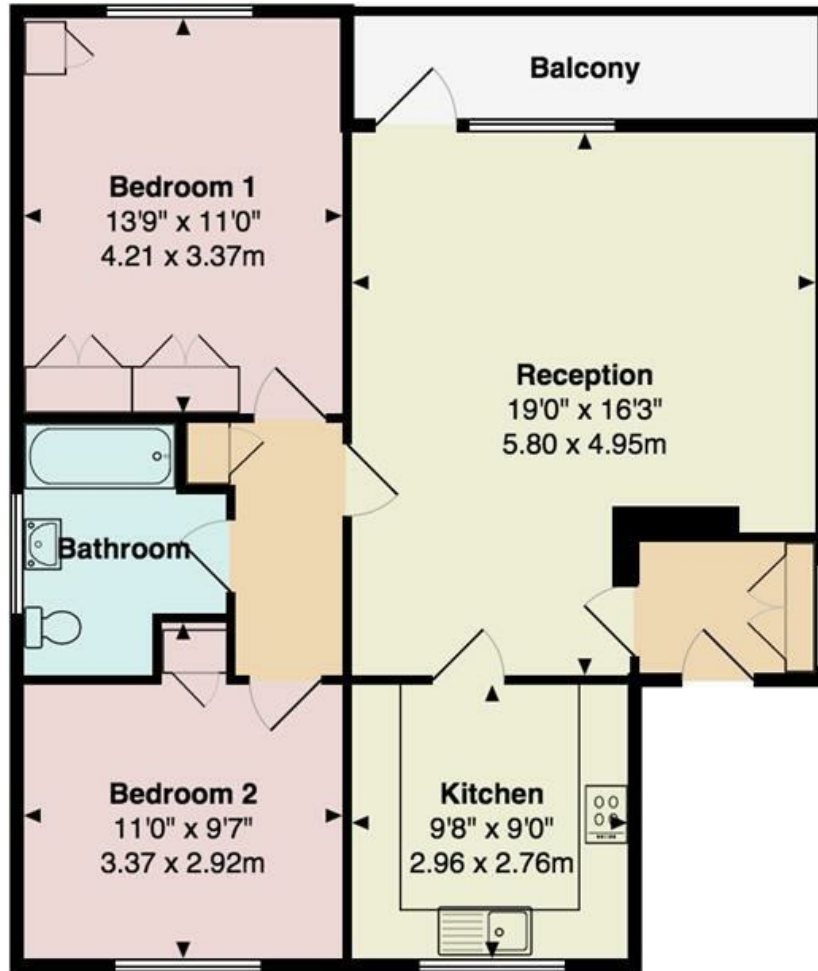
£799,950

An attractive two double bedroom apartment, occupying the top floor of a small residential block, a short walking distance from Hampstead Heath. The property is offered in a good condition throughout, and benefits from naturally bright rooms, a private balcony and an off street parking space for one car.

*** TWO BEDROOMS * RECEPTION ROOM * SEPARATE KITCHEN * BATHROOM * PRIVATE BALCONY * OFF STREET PARKING SPACE FOR ONE CAR * RESIDENTS PERMIT PARKING * SHARE OF FREEHOLD * EPC E * COUNCIL TAX BAND E**







First Floor

Parkhill Road NW3

Total Area: 781 ft² ... 72.6 m²

Dimensions are approximate; for display purposes only. (c) Peninsula Surveys Ltd.

