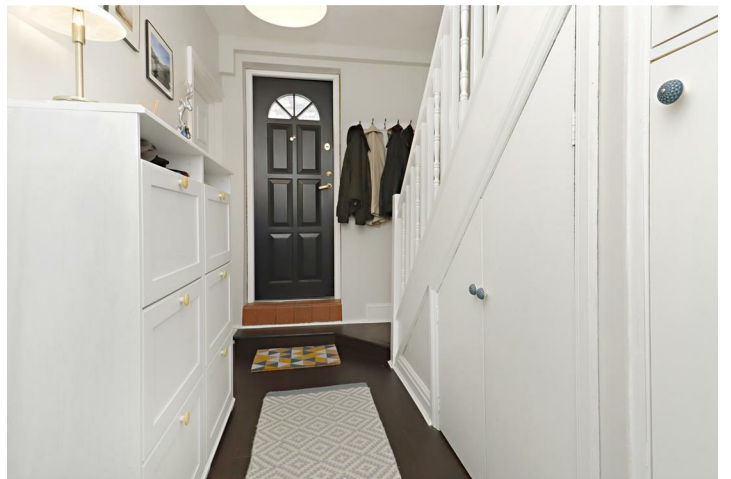
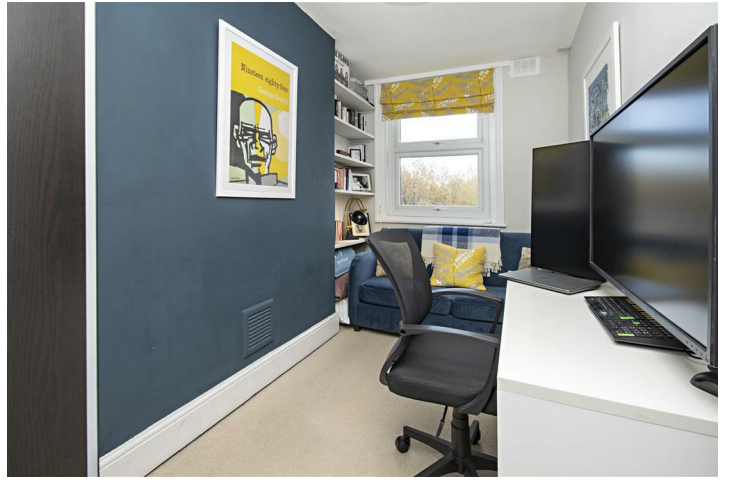


Kingsford Street, Gospel Oak, NW5 4JT

£599,950

A particularly stylish and well presented upper maisonette, arranged over two floors and situated within a short walking distance of Hampstead Heath. There are two good sized bedrooms, a beautifully appointed bathroom and a very spacious reception room with open plan kitchen on the top floor, providing an abundance of natural light. An additional benefit is the attractive south west facing roof terrace. Kingsford Street is a quiet cul-de-sac, and is close to the excellent 24 and 46 bus routes into the City and West End, along with Belsize Park (Northern line) station and the bustling shopping and dining district of South End Green.





Sun Court



Second Floor



Third Floor

Approx. Gross Internal Area: 735 ft² ... 68.3 m² (excluding roof terrace)

All measurements and areas are approximate only.
Dimensions are not to scale. This plan is for guidance only and must not be relied upon as a statement of fact.

