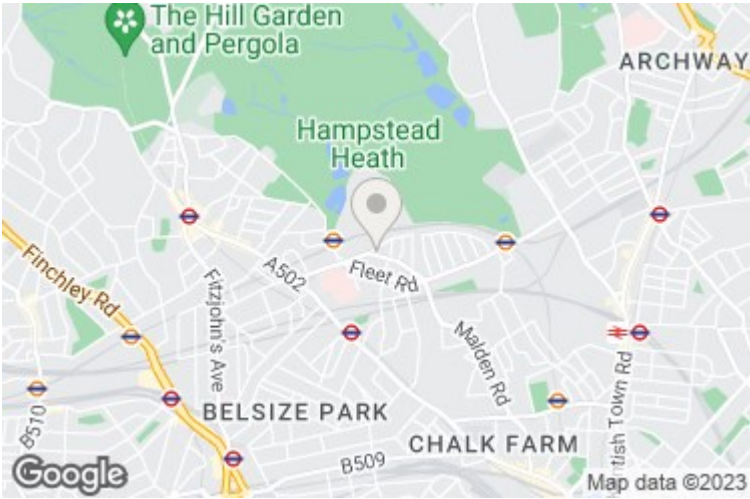


Agincourt Road, Hampstead, NW3 2PD

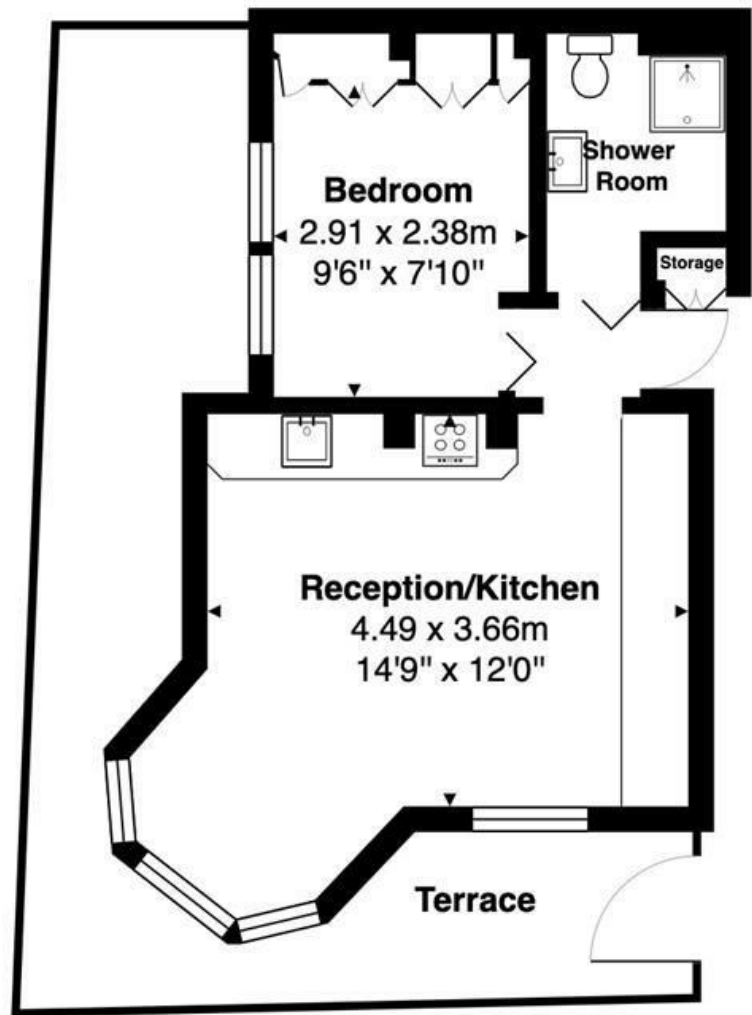
£399,950

Positioned on the corner of Cressy Road and Agincourt Road, a unique one bedroom ground floor apartment with access to a small private garden.

ONE BEDROOM * RECEPTION/OPEN PLAN KITCHEN * SHOWER ROOM/WC * CENTRAL HEATING * SMALL GARDEN/NEEDING WORK * MOMENTS FROM SOUTH END GREEN * HAMPSTEAD HEATH (OVERGROUND STATION) * ROYAL FREE HOSPITAL * BELSIZE PARK (NORTHERN LINE) UNDERGROUND STATION * EPC D * COUNCIL TAX BAND C * SHARE OF FREEHOLD * RESIDENTS PERMIT PARKING



Agincourt Road, LONDON, NW3 2PD



Ground Floor

Total Area: 32.3 m² ... 348 ft² (excluding storage)

All measurements are approximate and for display purposes only.

