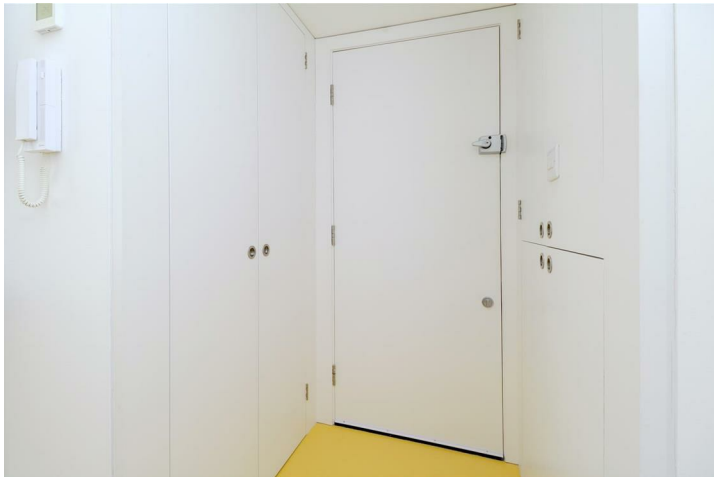
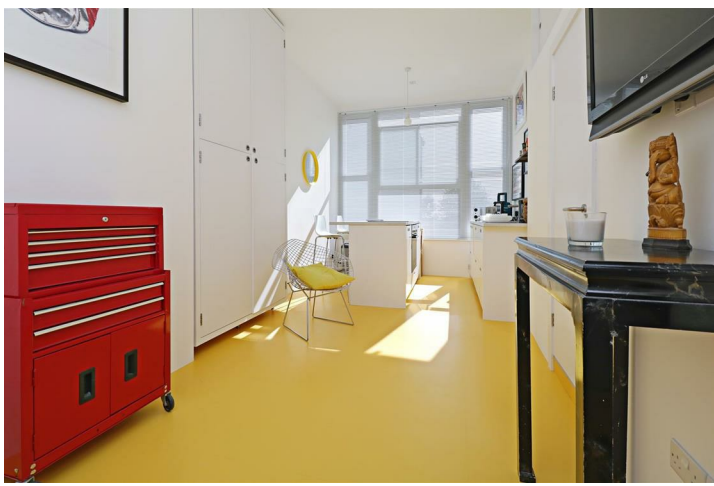


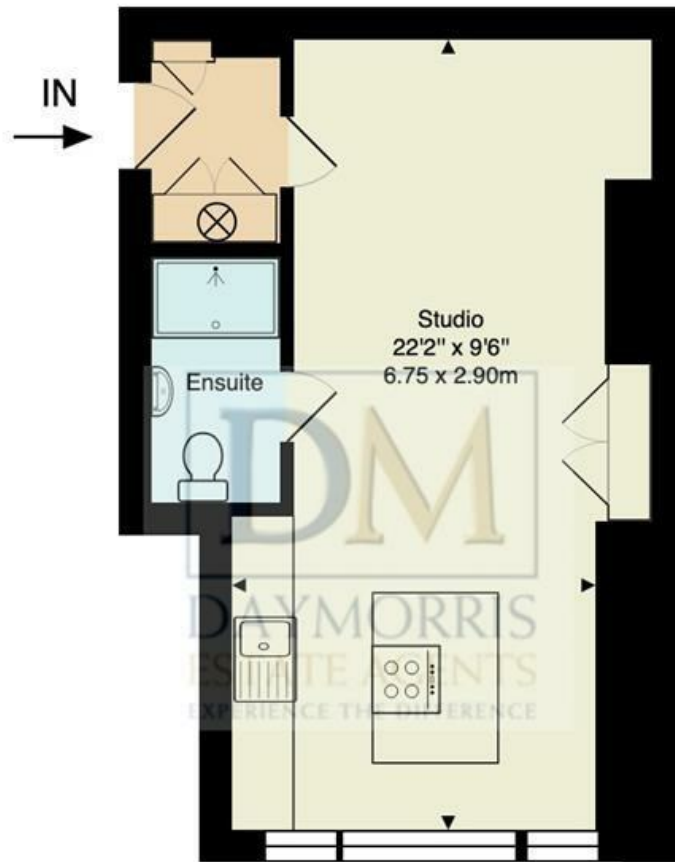
Willoughby Road, Hampstead, NW3 1SA

£399,950

A rare opportunity to purchase an outstanding studio apartment, in the heart of Hampstead Village. Situated on the first floor of a converted Victorian property, the flat is very tastefully presented, with a large window to the rear, providing a wonderfully bright southerly aspect. An ideal pied-a-terre or first time purchase, located just moments from Hampstead High Street, and a short walk from the open spaces of Preacher's Hill and Hampstead Heath.



Willoughby Road NW3



First Floor

Approx. Gross Internal Area: 277 ft² ... 25.7 m²

All measurements and areas are approximate only.
Dimensions are not to scale. This plan is for guidance
only and must not be relied upon as a statement of fact.
(c) Peninsula Surveys Ltd

Energy Efficiency Rating		
	Current	Potential
Very energy efficient - lower running costs		
(92 plus) A		
(81-91) B		
(69-80) C		
(55-68) D		
(39-54) E		
(21-38) F		
(1-20) G		
Not energy efficient - higher running costs		
England & Wales	EU Directive 2002/91/EC	

Environmental Impact (CO ₂) Rating		
	Current	Potential
Very environmentally friendly - lower CO ₂ emissions		
(92 plus) A		
(81-91) B		
(69-80) C		
(55-68) D		
(39-54) E		
(21-38) F		
(1-20) G		
Not environmentally friendly - higher CO ₂ emissions		
England & Wales	EU Directive 2002/91/EC	