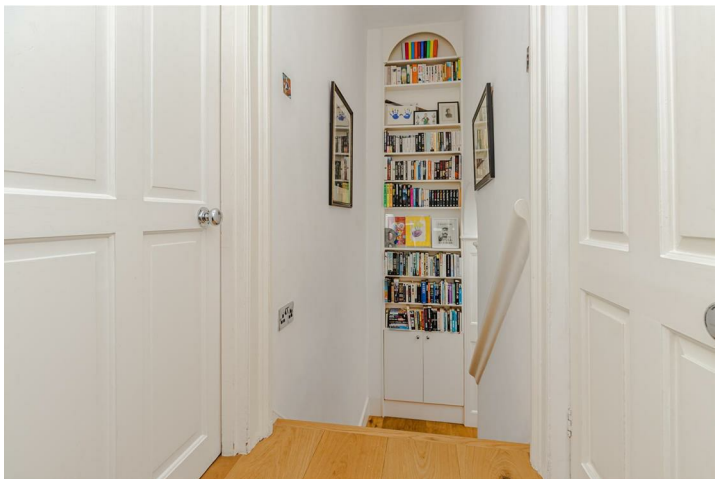
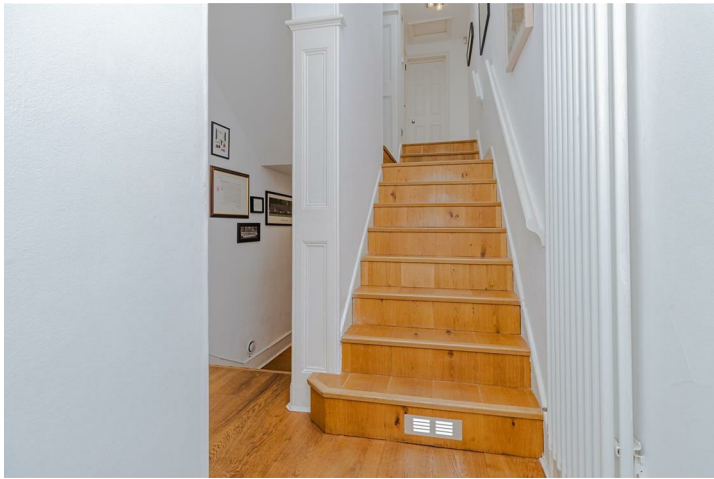
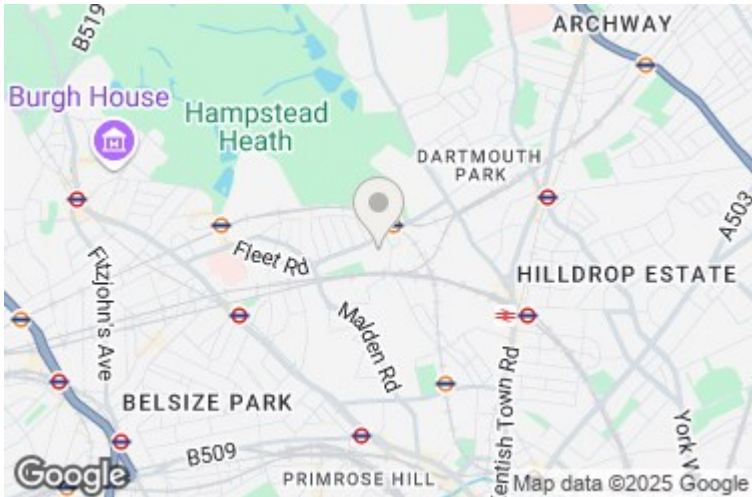


Oak Village, Gospel Oak, NW5 4QN

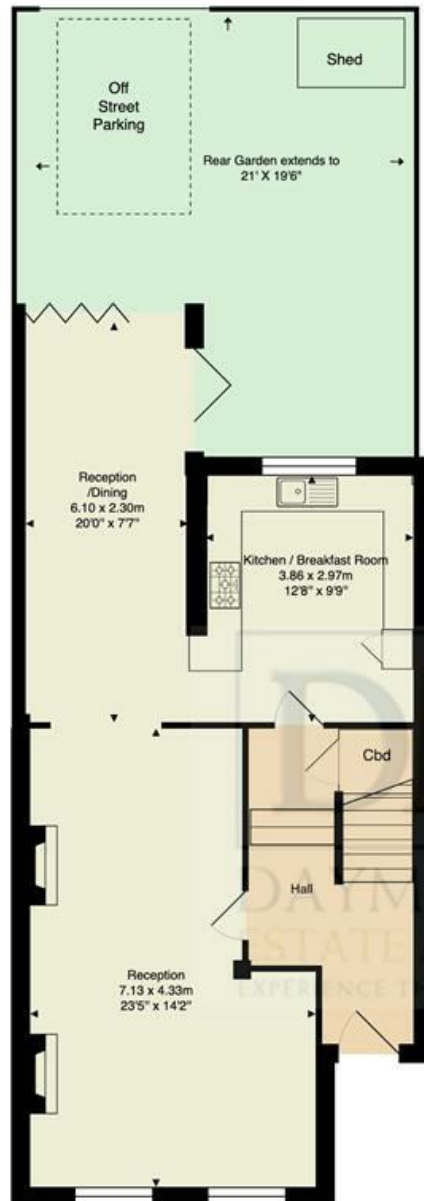
£1,399,950

Beautifully designed by the present owners, this three bedroom Victorian cottage is quietly located in the peaceful and popular residential area of Oak Village. The property has been expertly modernised to provide a wonderful feeling of natural light across both floors, with a side return extension giving access to the south facing garden at the rear. The charm and character for which these houses are renowned for can be seen and felt throughout. The property holds an enviable position in this community minded street and allows direct access into the garden from the rear of the property, with the option of private off street parking. A quality family home in a gorgeous setting, just a short walk from the Parliament Hill entrance to Hampstead Heath, the Lido and the 'Outstanding' rated Gospel Oak Primary School. Chain Free.





Oak Village NW5



Ground Floor



First Floor

Approx. Gross Internal Area: 123.7 m² ... 1332 ft²

All measurements and areas are approximate only.
Dimensions are not to scale. This plan is for guidance
only and must not be relied upon as a statement of fact.
(c) Peninsula Surveys Ltd

