

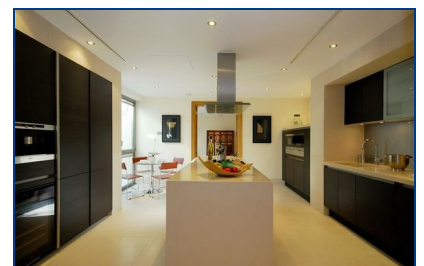


## Highgate West Hill, , London, N6 6NH

**£4,500 Per Week**

located on the highly sought after southern slopes of Highgate is this stunningly designed, 6 bedroom detached family home, which has been recently built to the highest of specifications. The property was designed to maximise the use of natural light, along with the use of oak and cherry wood creating a highly contemporary feel. The house has 4994sqft of living accommodation, a further 2000sqft of terracing, secluded garden, waterfall feature and a double garage with turntable. Available NOW UNFURNISHED.

- 5/6 DOUBLE BEDROOMS
- 4 BATHROOMS
- 2000 SQ FT OF TERRACING
- 3 RECEPTIONS
- GUEST WC
- LIFT
- KITCHEN/DINER
- DOUBLE GARAGE WITH TURNTABLE
- PATIO GARDEN WITH WATERFALL



Energy Efficiency Rating		Environmental Impact (CO <sub>2</sub> ) Rating	
Current	Potential	Current	Potential
78	79	77	77
<small>Best energy efficient - lower running costs</small> <small>Not energy efficient - higher running costs</small>		<small>Best environmentally friendly - lower CO<sub>2</sub> emissions</small> <small>Not environmentally friendly - higher CO<sub>2</sub> emissions</small>	
<small>England &amp; Wales</small> EU Directive 2002/91/EC		<small>England &amp; Wales</small> EU Directive 2002/91/EC	