

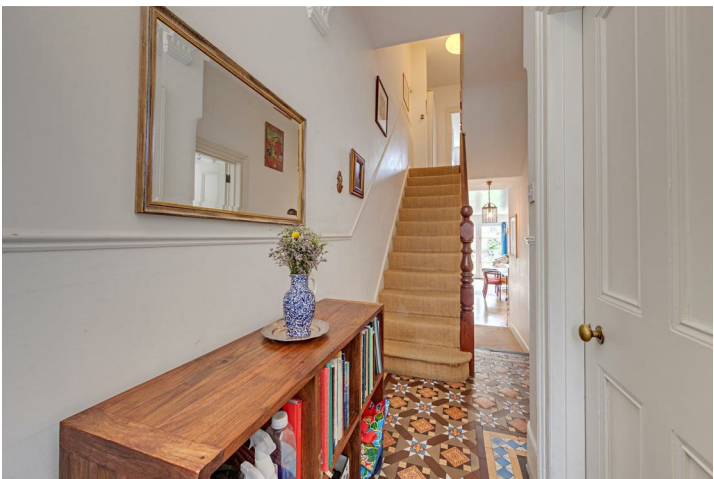


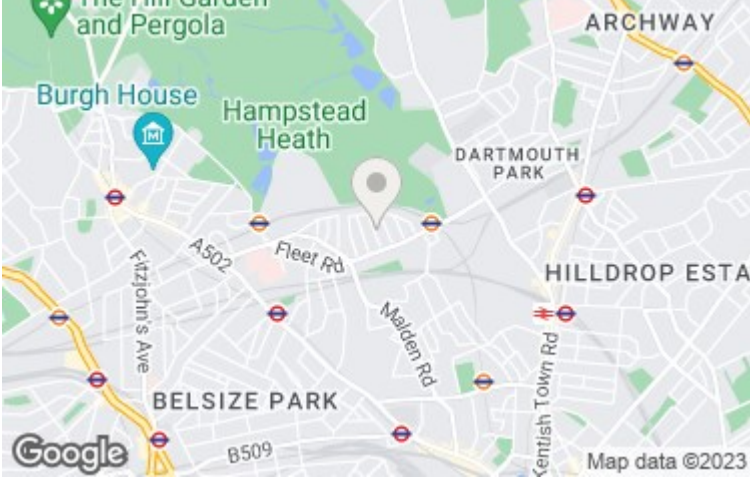
Courthope Road, Hampstead, NW3 2LD

£2,595,000

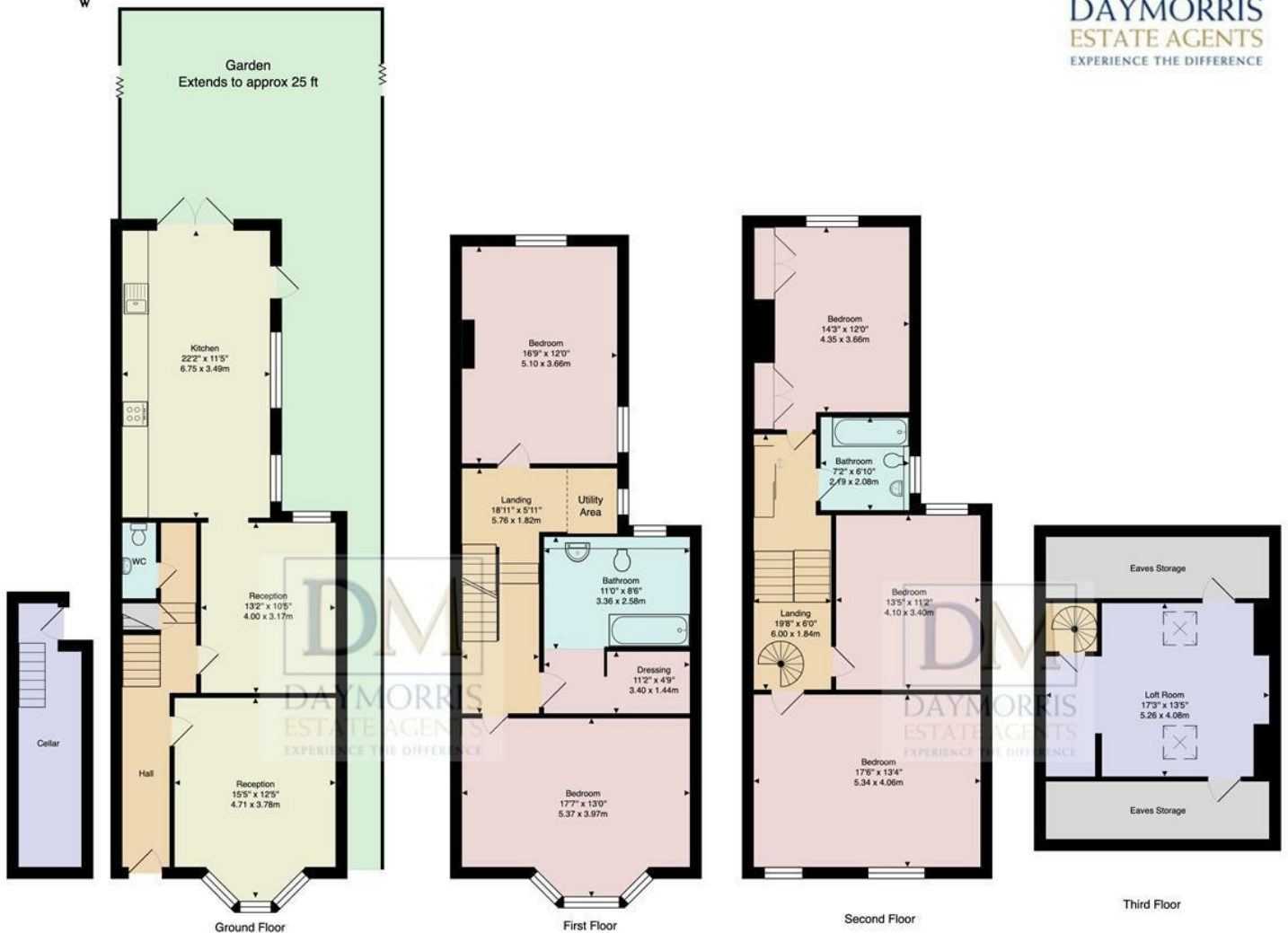
At just over 2400 square feet, this end of terrace five bedroom house offers flexible accommodation across four floors, just a short stroll from Hampstead Heath. The house has been lovingly maintained by the present owners, with naturally lit rooms throughout and an idyllic private garden at the rear, with direct access available via the side of the property. There is the potential to further enhance the internal space on the ground floor by extending into the side return, subject to the necessary planning consent. Courthope Road is a quiet residential street, within walking distance of the excellent nearby transport links, and the popular shopping areas of both Belsize Park and South End Green.

FIVE BEDROOMS * DOUBLE RECEPTION * LARGE KITCHEN * TWO BATHROOMS * ATTIC ROOM * GUEST CLOAKROOM *
 PRIVATE GARDEN * CELLAR * FREEHOLD * EPC D





Courthope Road, NW3



Approx. Gross Internal Area: 2414 ft² ... 224.3 m² (excluding cellar, eaves storage)

All measurements and areas are approximate only.
Dimensions are not to scale. This plan is for guidance only and must not be relied upon as a statement of fact.

