

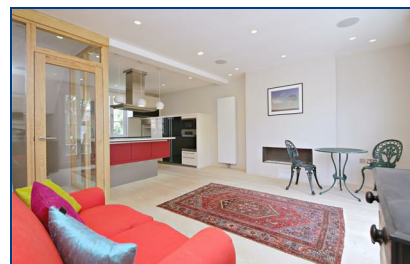


## Southampton Road, , London, NW5 4HX

**Asking Price £950,000**

There are conversions and there are superior conversions. This multiplex is a stunner, what a flat! Three floors of wonderful design and finish giving the viewer a sense of walking into a house. Size, layout, modernity, outlook, all the hallmarks of an all round inner London home. The accommodation offers spacious rooms throughout, with three bright bedrooms (two en-suite) and a large reception with a fully fitted kitchen. There are two roof terrace areas (at the front and the rear) along with an additional balcony from the reception and a private front garden. Another major bonus is that the apartment is being sold with the Freehold of the building. Southampton Road is perfectly placed just a short walk from the open spaces of both Hampstead Heath and Primrose Hill. CHAIN FREE.

- THREE DOUBLE BEDROOMS (TWO EN-SUITE)
- TWO ROOF TERRACE AREAS
- EPC D
- RIGHT RECEPTION ROOM WITH OPEN PLAN KITCHEN AND PRIVATE BALCONY
- FRONT GARDEN
- SHOWER ROOM
- RESIDENTS PERMIT PARKING



Energy Efficiency Rating		Environmental Impact (CO <sub>2</sub> ) Rating	
Band	Score	Band	Score
A	92-100	A	10-15
B	81-91	B	16-20
C	69-80	C	21-25
D	55-68	D	26-30
E	39-54	E	31-35
F	21-38	F	36-40
G	1-20	G	41-45

England & Wales EU Directive 2002/91/EC