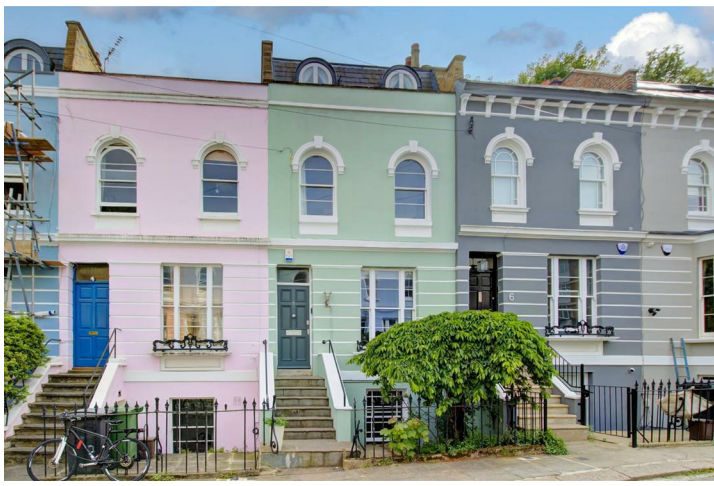


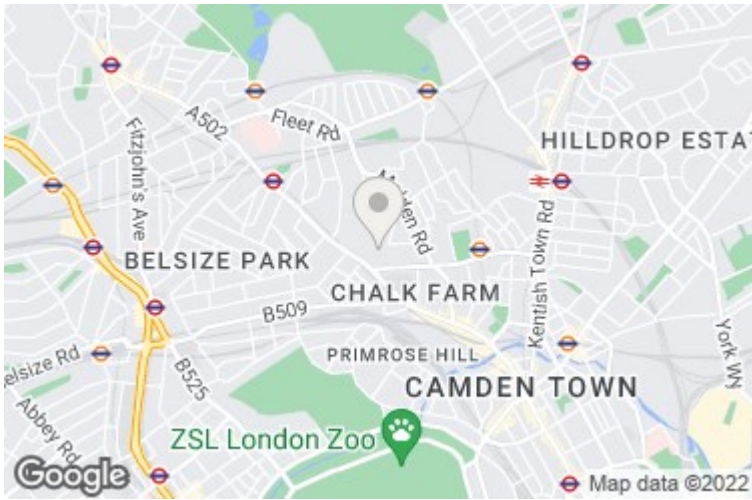
Modbury Gardens, Chalk Farm, NW5 3QE

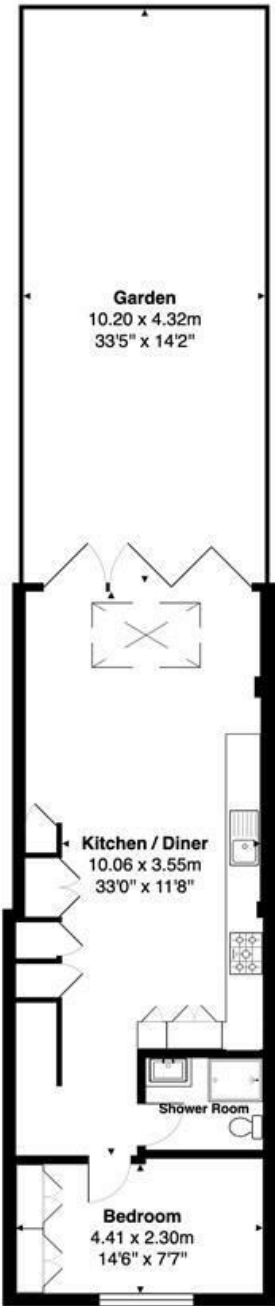
£1,895,000

Fully refurbished to a high standard throughout, this family house is beautifully finished and arranged over four floors, and located on a quiet cul-de-sac just a short walk from Hampstead Heath and Primrose Hill. There is a wonderful feeling of natural light across each level, and the quality of the modernisation shines through from room to room. There is an attractive sunny roof terrace, overlooking the charming south west facing rear garden.

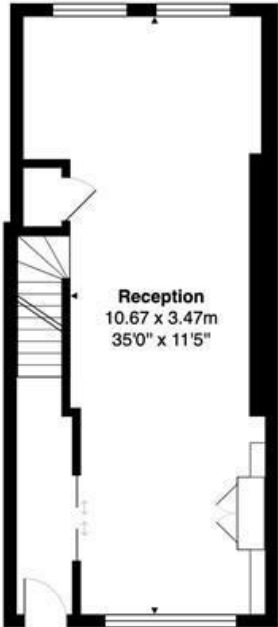
* DOUBLE RECEPTION * THREE BEDROOMS * LARGE KITCHEN/DINING ROOM * TWO BATHROOMS (ONE EN-SUITE) * SHOWER ROOM * OFFICE/GUEST BEDROOM * SOUTH WEST FACING GARDEN * OUTSIDE SHED AND STORAGE SPACE * SUNNY ROOF TERRACE * COUNCIL TAX BAND G * EPC C * FREEHOLD







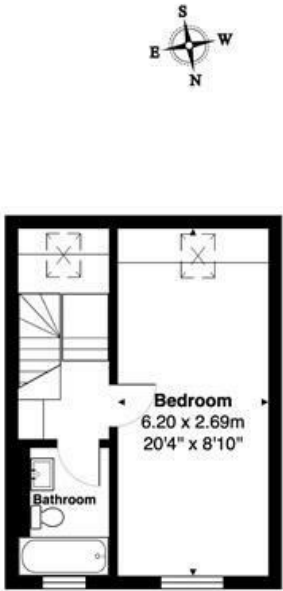
Lower Ground Floor



Upper Ground Floor



First Floor



Second Floor



Total Area: 159.7 m² ... 1719 ft² (excluding garden, terrace)

All measurements are approximate and for display purposes only.

These details are subject to contract

