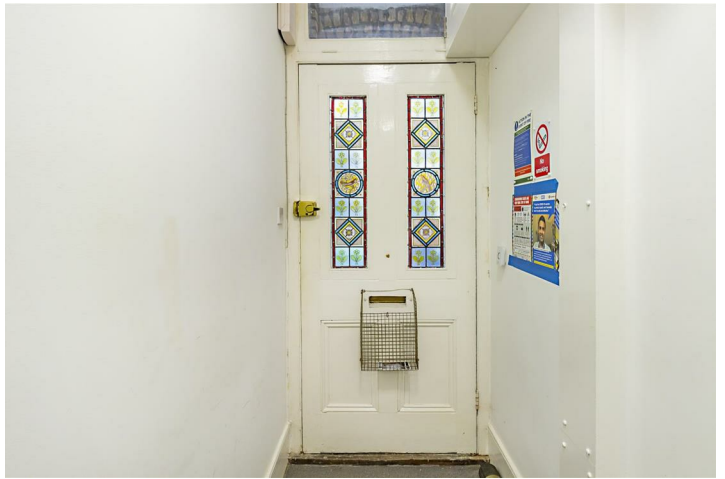


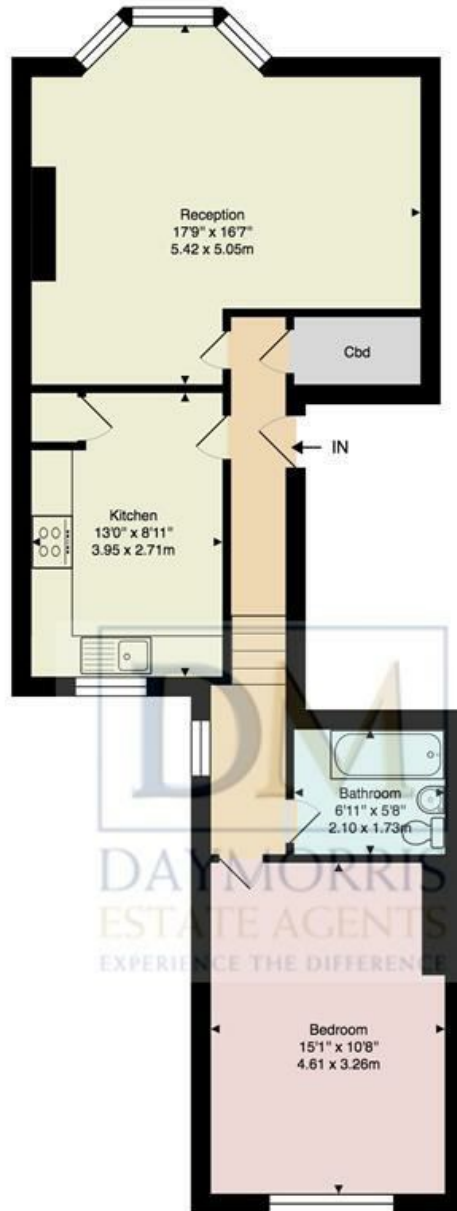
Shirlock Road, Hampstead, NW3 2HS

£595,000

A perfectly proportioned apartment occupying the entire first floor of this late Victorian terraced property, on the higher end of a delightful residential street only moments from Hampstead Heath.



Shirlock Road, NW3



First Floor

Approx. Gross Internal Area: 657 ft² ... 61.0 m²

All measurements and areas are approximate only.
Dimensions are not to scale. This plan is for guidance only and must not be relied upon as a statement of

