

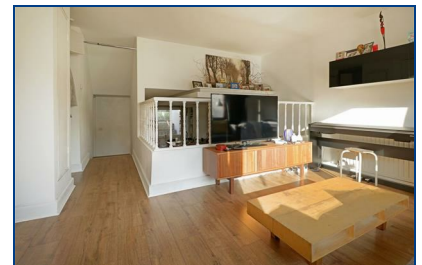


Mansfield Road, , Hampstead, NW3 2JE

£435,000

A generously proportioned split level one bedroom garden apartment in this listed Local Authority development by the renowned architects Benson & Forsyth, close to Hampstead Heath. In excess of 630 sq. ft, the bright internal space offers a 19' kitchen/dining room leading up to the raised reception room with patio doors out to the south facing garden. There is an additional courtyard from the double bedroom, plus a three-piece suite bathroom. Recently the development has completed a total external overhaul. These highly desirable apartments are very conveniently located in close proximity to Gospel Oak overground station, within fifteen minutes walk to Belsize Park Underground station plus the many bus routes to hand. Ideal first time buyer or investment.

- ONE BEDROOM
- BRIGHT RECEPTION ROOM
- RESIDENTS PERMIT PARKING
- EPC C
- KITCHEN/DINER
- PRIVATE GARDEN
- VERY CLOSE TO HAMPSTEAD HEATH
- SPLIT LEVEL
- COURTYARD PATIO
- VARIOUS TRANSPORT OPTIONS



Energy Efficiency Rating		Environmental Impact (CO ₂) Rating	
Best energy efficient - lower energy costs	Worst	Best environmentally friendly - lower CO ₂ emissions	Worst
A	G	A	G
B	F	B	F
C	E	C	E
D	D	D	D
E	C	E	C
F	B	F	B
G	A	G	A

England & Wales EU Directive 2002/91/EC