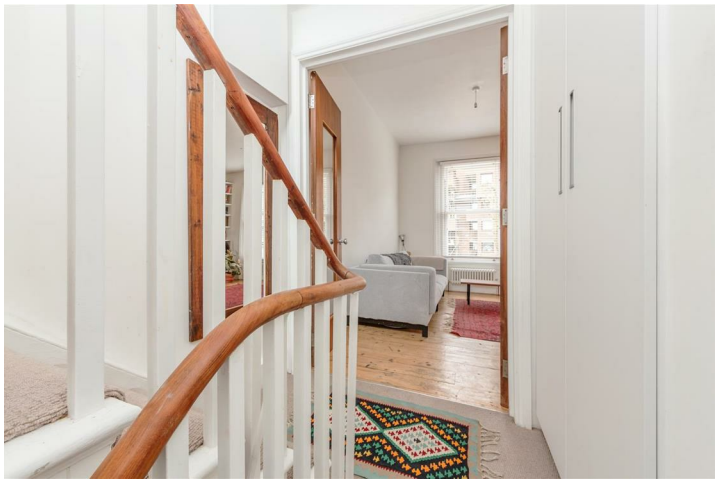
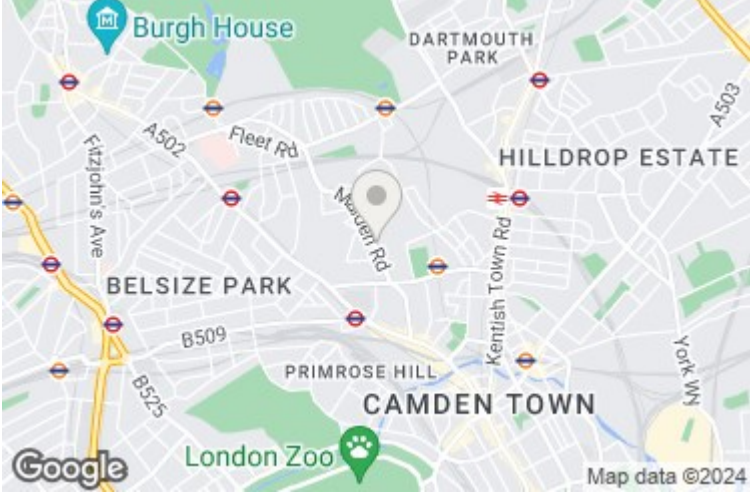


Malden Road, Kentish Town, NW5 4DA

£765,000

A tastefully presented two double bedroom apartment, within easy walking distance of both Hampstead Heath and Primrose Hill. At just under 1000 square feet, the property enjoys spacious accommodation throughout. There is an abundance of natural light, and the option of a possible third/guest bedroom, currently being used as a study. Camden Town is within easy reach, along with the Northern Line at Chalk Farm. Malden Road benefits from two excellent bus links, with the 46 and 26 giving quick and convenient access to the City and West End.





Malden Road, NW5



First Floor

Ground Floor

Second Floor

Approx. Gross Internal Area: 91.0 m² ... 980 ft²

All measurements and areas are approximate only.
Dimensions are not to scale. This plan is for guidance only and must not be relied upon as a statement of fact.

