

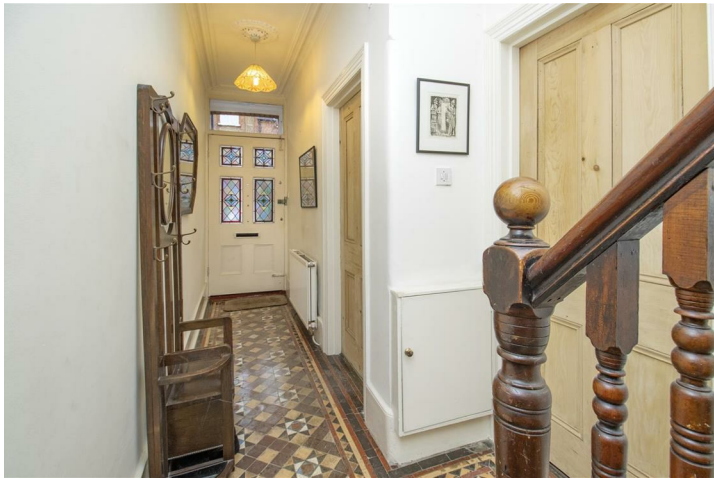


## **Lisburne Road, Hampstead, NW3 2NS**

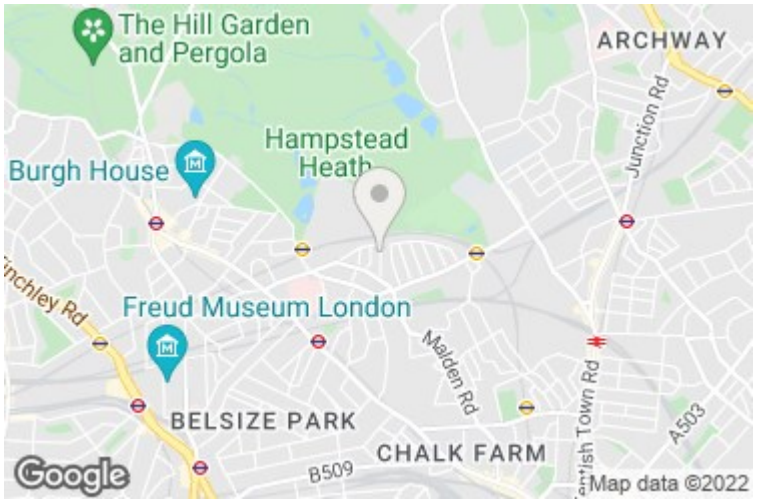
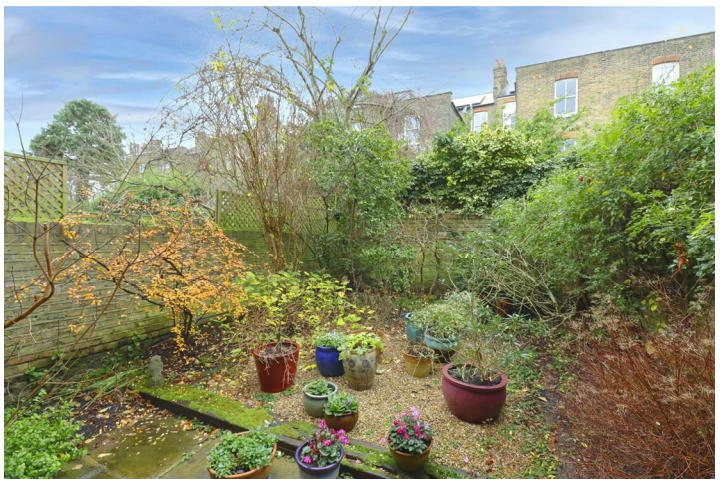
**£1,750,000**

A four bedroom mid terraced Victorian house located on a quiet residential street, just a short walk from the footbridge to Parliament Hill and Hampstead Heath. Available for the first time several decades, the property has been well looked after by the present owner and has plenty of room for the growing family, with flexible accommodation arranged over three floors. There is a private rear garden which provides the potential for enhancing the ground floor area by developing the side return, subject to the usual planning consent.









Lisburne Road NW3



Approx. Gross Internal Area: 1517 ft² ... 140.9 m²

All measurements and areas are approximate only.  
Dimensions are not to scale. This plan is for guidance only and must not be relied upon as a statement of fact.

