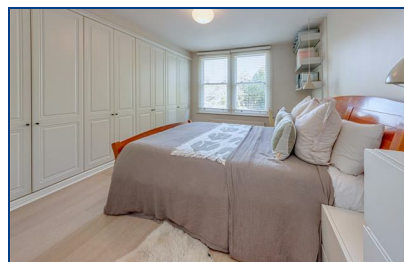




Savernake Road, , Hampstead, NW3 2JR

£825,000

A beautifully presented apartment positioned on the first floor of a Victorian conversion, providing two double bedrooms and plenty of natural light throughout. The property is within a short walking distance of the footbridge to Parliament Hill and Hampstead Heath beyond, along with the bustling shopping district of South End Green,



- TWO BEDROOMS
- BRIGHT RECEPTION/OPEN PLAN KITCHEN
- BATHROOM
- BEAUTIFULLY PRESENTED THROUGHOUT
- CLOSE TO HAMPSTEAD HEATH
- EPC D
- COUNCIL TAX BAND E
- SHARE OF FREEHOLD
- SERVICE CHARGE £100 PER MONTH

Energy Efficiency Rating			Environmental Impact (CO ₂) Rating		
	Current	Potential		Current	Potential
Not energy efficient - higher running costs England & Wales EU Directive 2002/91/EC			Not environmentally friendly - higher CO ₂ emissions England & Wales EU Directive 2002/91/EC		