

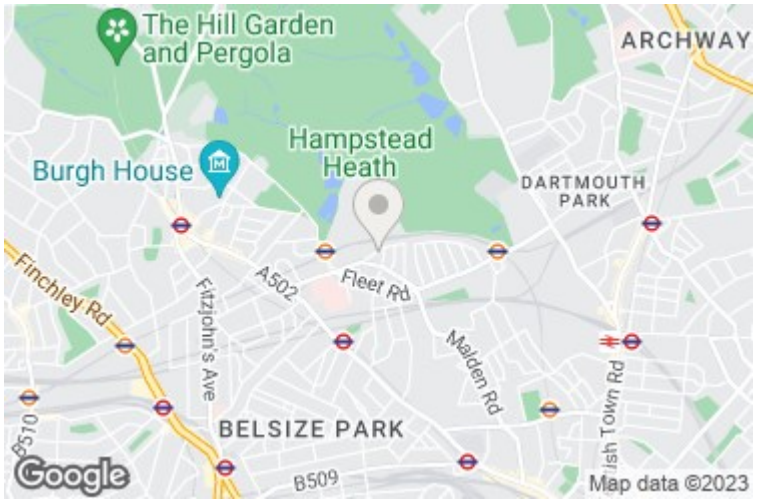
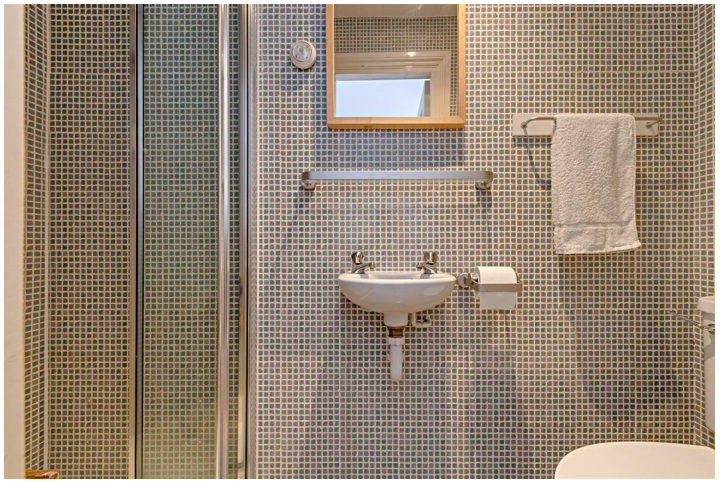


Constantine Road, Hampstead, NW3 2LP

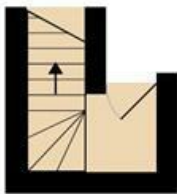
£765,000

This two double bedroom apartment is arranged over the top two floors of a Victorian conversion, just a short walk from Hampstead Heath and South End Green. The property has a share of the freehold and access to a private roof terrace, ideal for al fresco dining in clement weather. The excellent bus and rail links found at South End Green are within easy reach, along with Belsize Park underground station. CHAIN FREE.

*** TWO DOUBLE BEDROOMS * BRIGHT RECEPTION * KITCHEN * BATHROOM * EN-SUITE SHOWER * PRIVATE ROOF TERRACE * SHARE OF FREEHOLD (OVER 900 YEARS ON THE LEASE) * RESIDENTS PERMIT PARKING * COUNCIL TAX BAND C * EPC C**



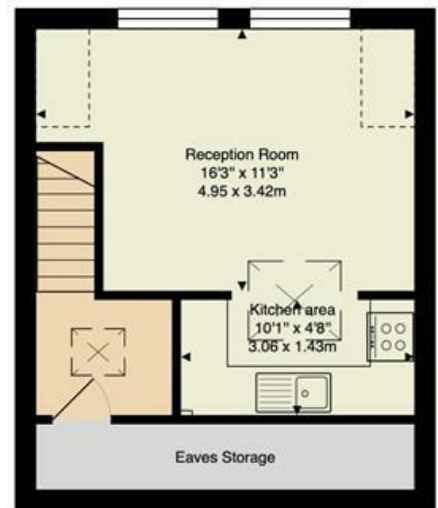
Constantine Road, London, NW3 2LP



First Floor



Second Floor



Third Floor

Approx. Gross Internal Area: 719 ft² ... 66.8 m² (excluding terrace, eaves storage)

All measurements and areas are approximate only.
Dimensions are not to scale. This plan is for guidance only and must not be relied upon as a statement of fact.

