

Elaine Grove, Gospel Oak, NW5 4QH

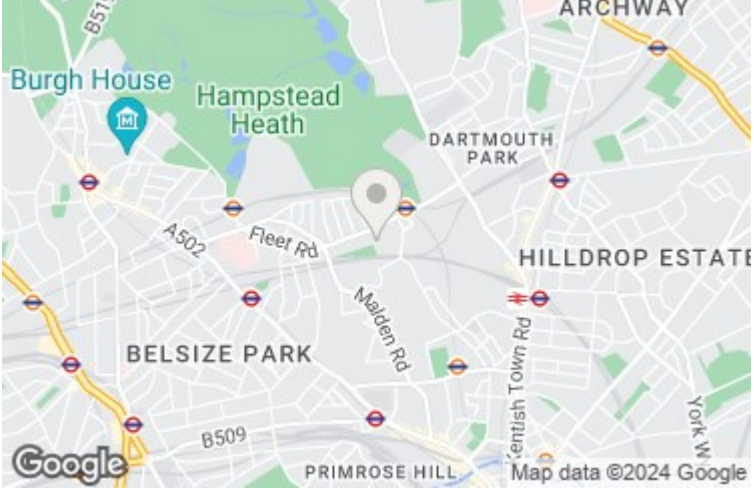
£1,450,000

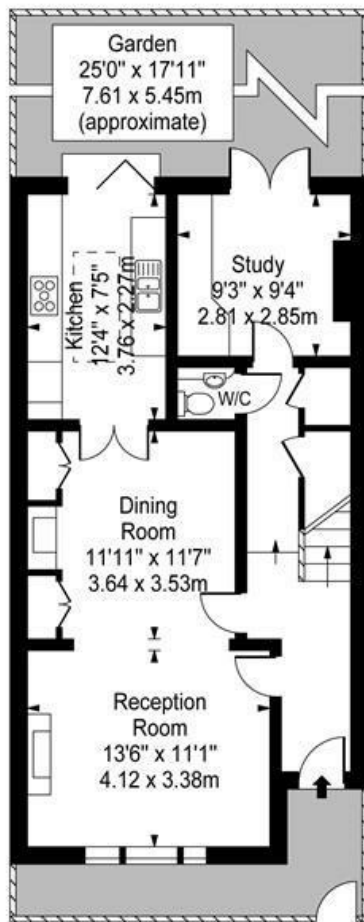
A charming Victorian cottage providing three/four bedrooms, with an idyllic south facing garden at the rear. The property has been lovingly maintained by the present owners, and benefits from a wonderful feeling of natural light throughout. Elaine Grove is within the ever popular residential area of Oak Village, just a short walk from the Heath, Parliament Hill lido and the 'Outstanding' Gospel Oak primary school.

THREE/FOUR BEDROOMS * DOUBLE RECEPTION ROOM * KITCHEN * STUDY/BEDROOM FOUR *
 BATHROOM * SOUTH FACING REAR GARDEN * RESIDENTS PERMIT PARKING * FREEHOLD * COUNCIL
 TAX BAND G

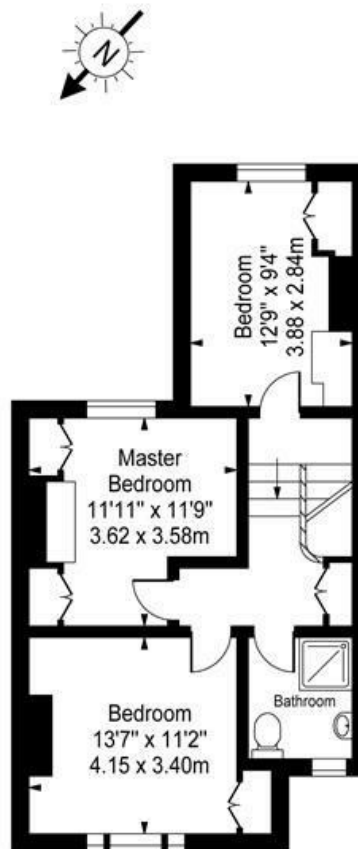








Ground Floor



First Floor

Approx. Gross Internal Area 1200 Sq Ft - 111.44 Sq M

For Illustration Purposes Only - Not To Scale Floor Plan by www.pmsupply.co.uk Ref: No. 15345

This floor plan should be used as a general outline for guidance only and do not constitute in whole or in part an offer or contract. Any intending purchaser or lessee should satisfy themselves by inspection, searches, enquiries and full survey as to the correctness of each statement. Any areas, measurements or distances quoted are approximate and should not be used to value a property or be the basis of any sale or let.

