



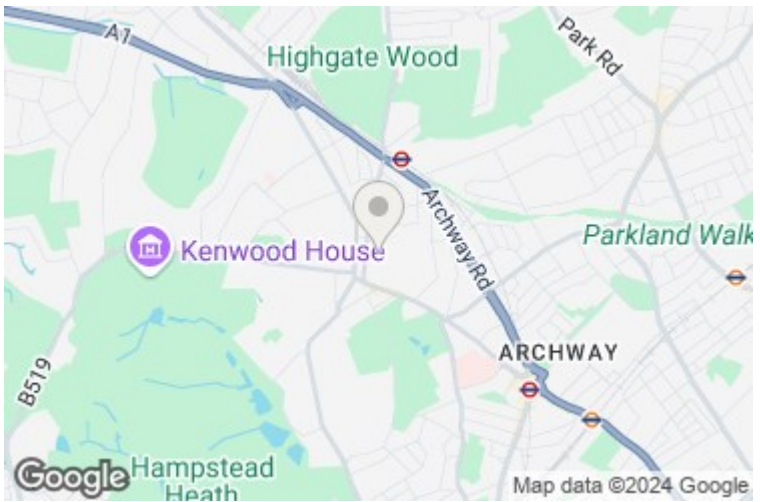
Kingsley Place, Highgate, N6 5EA

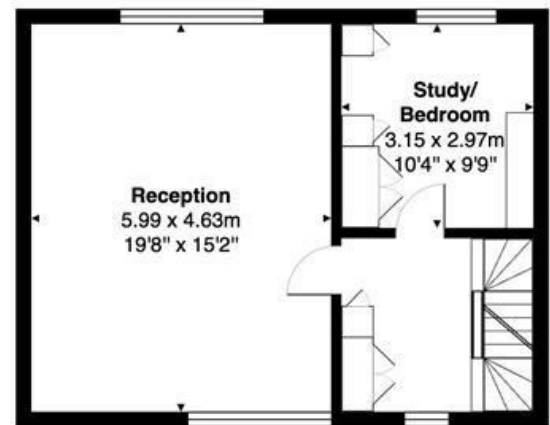
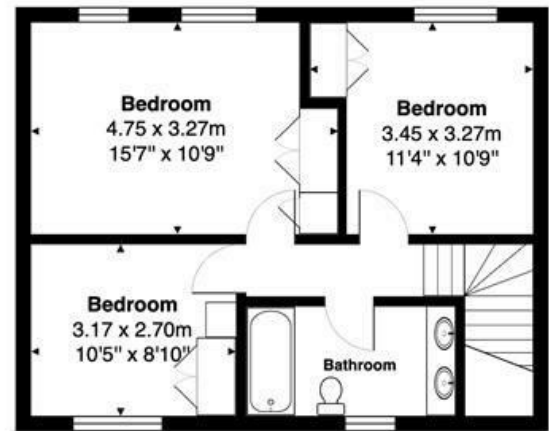
£1,695,000

A superb mid-century modern end of terrace Town House, in award-winning development by Architects Co-Partnership, with well designed accommodation arranged over three floors, comprising three bedrooms, bathroom, reception room, study or fourth bedroom, large kitchen/breakfast room, store room and shower/cloakroom. There is a delightful South facing patio garden with side gate and open rear aspect. Situated in a desirable cul-de-sac setting off Southwood Lane, between Highgate High Street and Highgate (Northern Line) Underground Station, as well as being conveniently placed for Waterlow Park and Hampstead Heath.

* 3 Bedrooms * Bathroom * Reception Room * Study/Bedroom 4 * Large Kitchen/Breakfast Room * Store Room * Shower/Cloakroom * Delightful South Facing Patio Garden * Council Tax Band G * EPC D *







Total Area: 138.7 m² ... 1493 ft²

All measurements are approximate and for display purposes only.
These details are subject to contract

