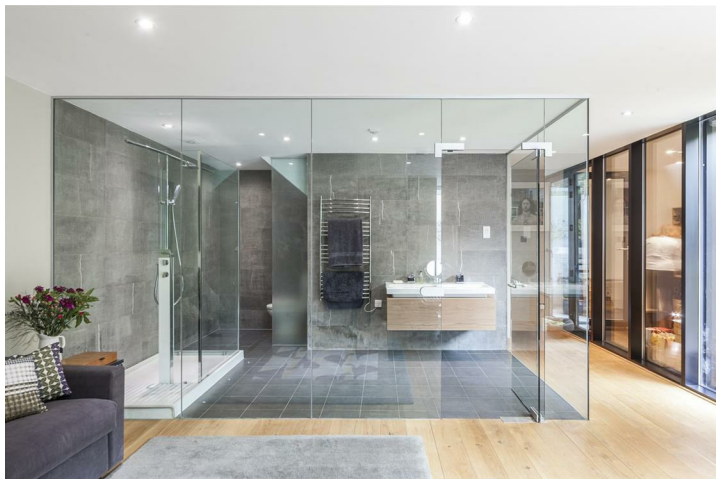


Fitzroy Park, Highgate, N6 6HT

£5,350,000

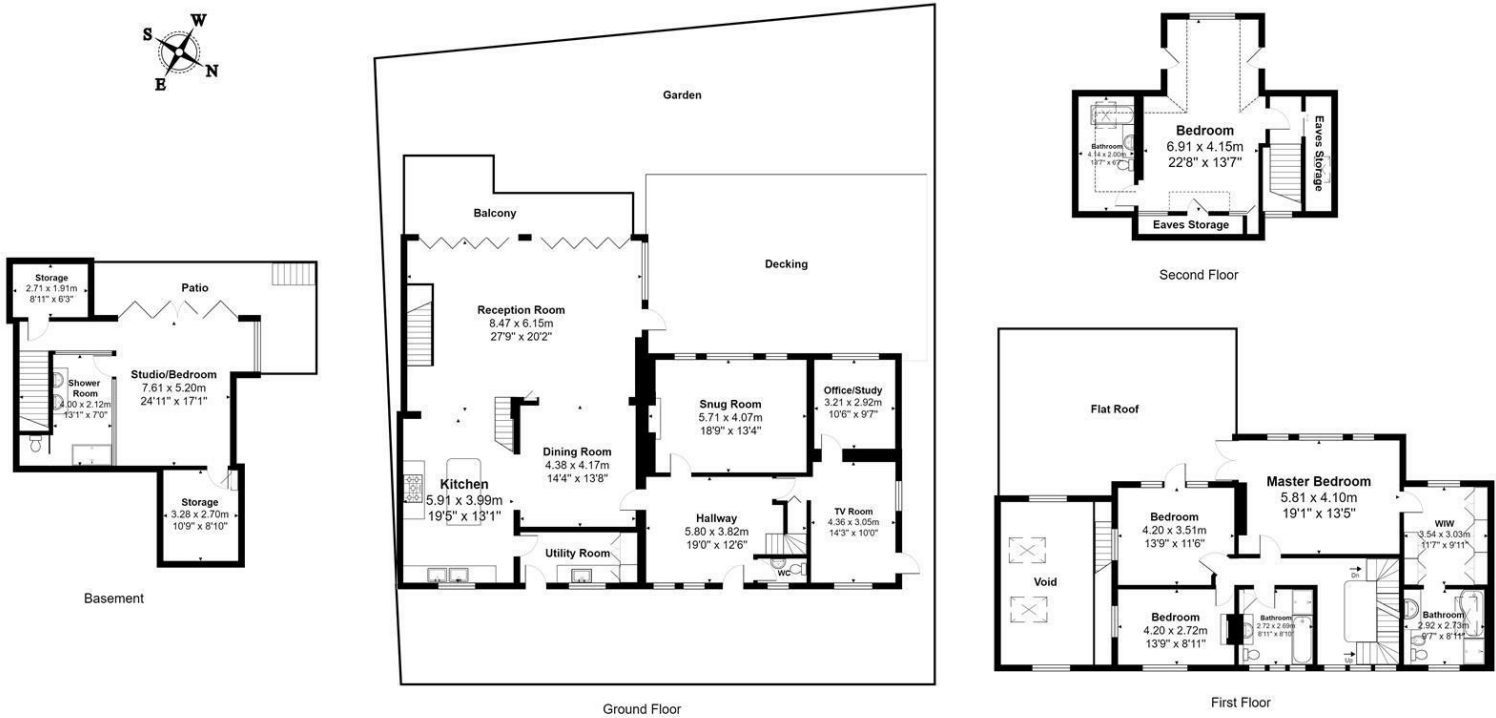
Rarely available and in arguably one of Highgate's finest locations, this house is really quite special. Perfectly suited for family living, the house manages to provide wonderfully generous entertainment space yet retain a level of intimacy for that all important homely feel. This is a sizeable property extending to in excess of 4,000 sq ft. The accommodation has character aplenty although there are modern elements which provide for a wonderful contrast. There are surprises too, not least the kitchen which soars to a double height vaulted ceiling and a minstrel gallery for added interest. Fitzroy Park is one of Highgate's "secrets", being a countrified private road on the doorstep of the 800 or so acres of Hampstead Heath. It may be a surprise then to discover that the hustle and bustle of Highgate Village, with its fine schools, shops and eateries is just a short amble away.

*Master Bedroom * en suite Dressing Room and Bathroom * 3/4 Further Bedrooms * 3 Further Bathrooms (2 en suite) * 4 Reception Rooms * Study *
 South-West Facing Rear Garden * Off Street Parking For 2 Cars * Private Road * Prime Location *





Westwind, Fitzroy Park, LONDON, N6 6HT



All measurements are approximate and for display purposes only
Total Area: 384.4 m² ... 4137 ft² (excluding void, including reduced headroom, eaves)
These details are subject to contract

