



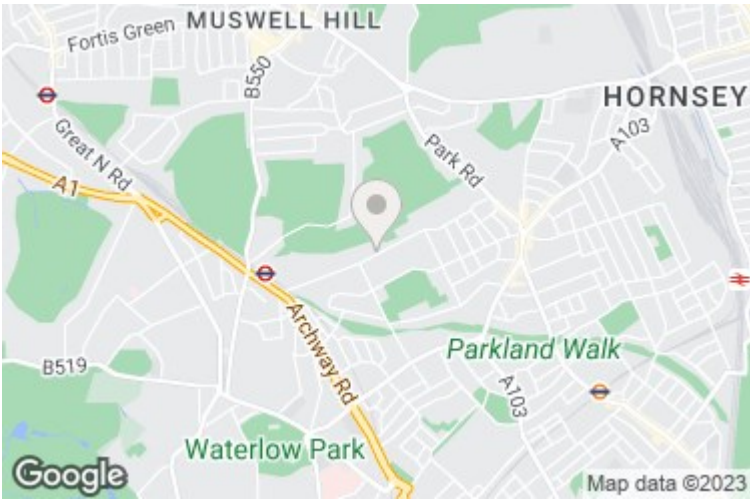
Shepherds Hill, Highgate, N6 5RE

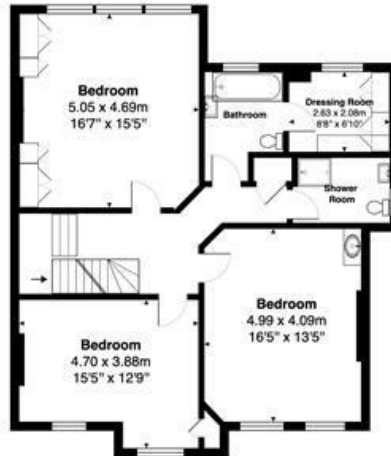
£2,595,000

A well appointed, detached, double fronted residence in this sought after Highgate location. This much loved but dated family house offers spacious accommodation over 3 floors including a large loft room extension. From the kitchen, a large conservatory leads to a vast, circa 180 ft rear garden. The house also benefits from off street parking for 2 cars. Situated in a convenient position being just a short walking distance from Highgate (Northern Line) Underground Station, Highgate and Queens Woods. The excellent shopping district of Crouch End is also within easy reach.

* 5 Bedrooms * Bathroom & Dressing Room En Suite * 2 Shower Rooms * Spacious Entrance Hall * 2 Reception Rooms * Fitted Kitchen * Conservatory * Utility Room * Guest WC * Exceptional Rear Garden * Double Parking Space * Council Tax Band H *







Total Area: 306.0 m² ... 3293 ft² (excluding eaves storage, storage)

All measurements are approximate and for display purposes only

These details are subject to contract

