

## **North Grove, Highgate, N6 4SH**

**£2,750,000**

A superior end of terrace 5 bedroom townhouse in one of Highgate's prime Village locations. The well planned interior has been significantly modernised providing excellent, inviting and practical living space. Perfectly suited for today's modern family, the property has the added advantage of having an integral garage, and a West facing rear garden. The shops and restaurants of Highgate Village are just moments away, with Highgate (Northern Line) underground Station, Highgate Woods, and Hampstead Heath all within a short walking distance.

\* Superior End of Terrace Townhouse \* Prime Village Location \* 5 Bedrooms (2 with en-suite bathrooms) \* Further Family Bathroom \* 3 Reception Rooms \* Kitchen \* Guest Cloakroom \* Store Room \* Cellar \* West Facing decked Rear Patio & Garden \* Integral Garage \*



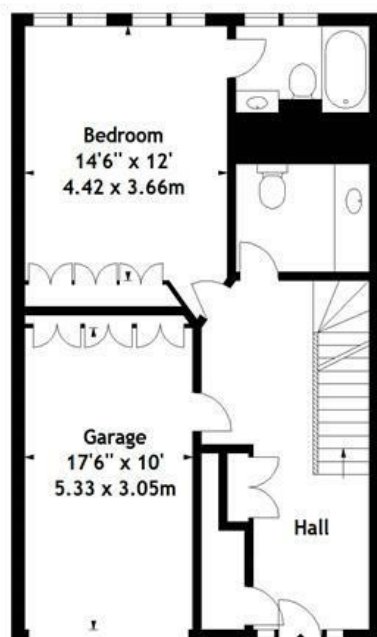




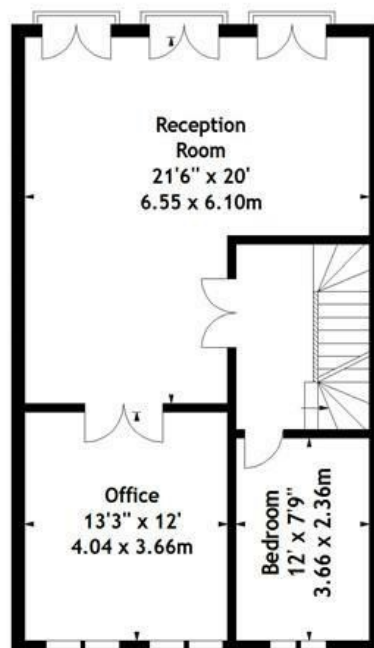




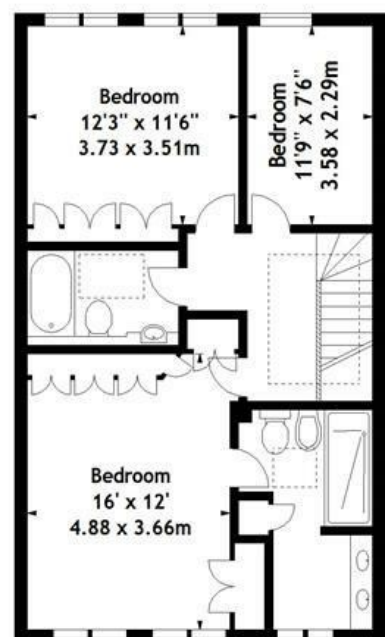
Lower Ground Floor



Ground Floor



First Floor



Second Floor

**North Grove, N6**  
 Approx. Gross Internal Area  
 2890 Sq Ft - 268.48 Sq M  
 (Including Garage)



Measured in accordance with RICS guidelines. Every attempt is made to ensure accuracy, however all measurements are approximate. This floor plan is for illustrative purposes only and is not to scale.  
 © Datagraphy Ltd 2013  
 Photographs \* Floorplans \* Virtual Tours  
 Tel: 0845 643 4401 [www.datagraphy.com](http://www.datagraphy.com)

